

SCISSORSAFE SYSTEM

CAST IN ANCHOR SYSTEM FOR PERSONAL FALL PROTECTION



**WE
SAVE
LIVES**

SAFETYRESPECT®



SCISSORSAFE CAST IN ANCHOR SYSTEM FOR PERSONAL FALL PROTECTION

Scissorsafe is an anchorage system for personal fall protection, designed to prevent construction workers from falling from the perimeters or edge of structures during construction.

Scissorsafe is an anchorage system designed specifically to prevent falls from height during the construction of concrete structures. This personal fall protection anchor is unique because it deploys into concrete voids that are cast using Scissorsafe void formers.

A cast in anchor system incorporated into the design of the structure offers safety and economical benefits, by removing the need to drill for anchor points or to load test friction reliant anchors, before a safety system can be connected to them. Anchor points are a vital part of a personal fall protection system. They are the critical component that connect lifelines, lanyards, fall arrestors and rescue devices to the permanent structure.

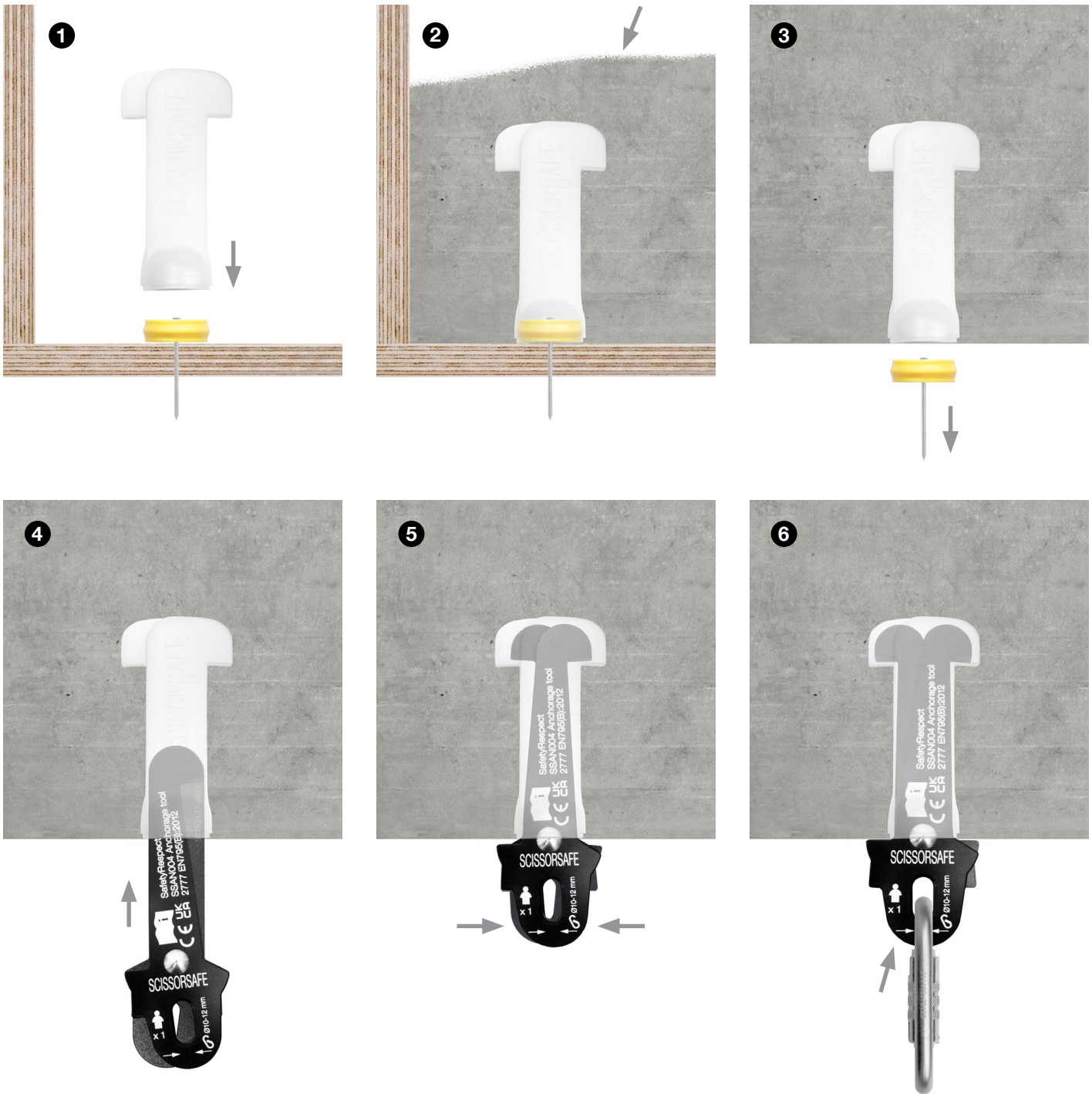
Scissorsafe anchorage points are created by nailing a two part plastic mould insert onto the horizontal

formwork which when removed reveals overhead anchorage points. Scissorsafe anchor tools have a unique mechanical action that opens within the concrete void and is locked by the karabiner on the connecting device.

Scissorsafe anchorage devices are economical as they are reusable throughout the project. Concrete drilling is eliminated reducing working at height, dust, noise and time. It is compatible for fall restraint and fall arrest systems providing overhead anchorage for temporary horizontal lifelines (running-lines) work positioning and fall arrest systems. The system is widely used for installing temporary edge protection, curtain-walling, unitised facades and balcony installation.

The Scissorsafe system is independently assessed under strict conditions to comply with the requirements of EN795 Class B.

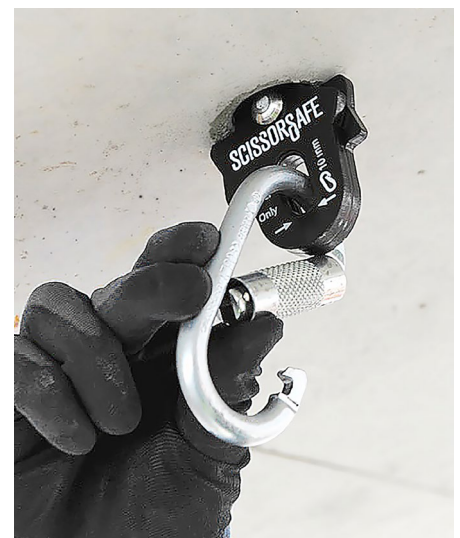


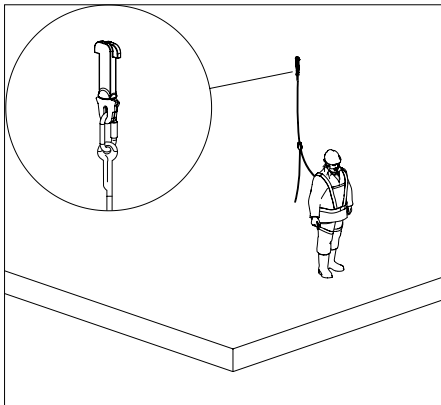


INSTALLATION PROCESS

The Scissorsafe Void former is an expendable plastic cast in component used to form anchorage points in precast or on site poured concrete. The void former consist of two parts. A 35 mm diameter circular disk is nailed or screwed to horizontal formwork in pre-designated locations. After that a T-shaped mould is pushed firmly onto the disk to form an inverted void in the concrete.

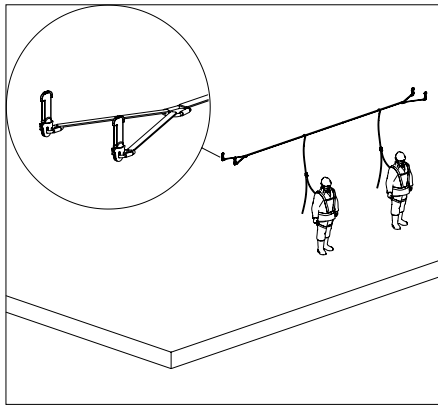
Scissorsafe anchors are inserted and deployed in this void when fall arrest or work restraint anchorage is required. The unique nature of this anchorage system means that the anchor isn't relying on friction to support the fall arrest system connected to it. Upon completion of the structure, the void formers can be closed off with grout or covered with a Scissorsafe plastic cover cap. These are generally used to disguise void former holes when the anchorage point is to be used for maintenance or repair work.





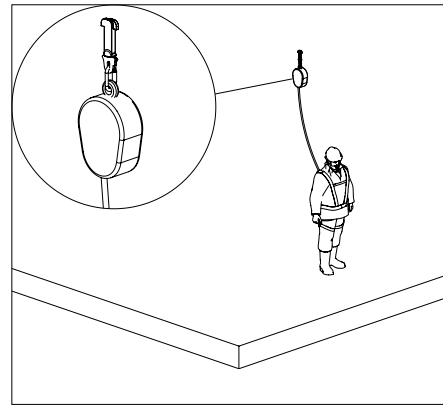
SINGLE POINT ANCHORAGE FOR ONE USER WORK RESTRAINT

Each anchorage is suitable for one person working in restraint, using an adjustable work positioner as a connecting device between anchorage point and harness, which is kept in tension whilst in use.



DUAL POINT ANCHORAGE FOR MULTIPLE USER WORK RESTRAINT

Suitable for multiple users simultaneously working in restraint. Dual anchors are linked by slings to a horizontal lifeline forming a ceiling height running line anchorage point up to 20 meters in length. Users attach to the lifeline using an adjustable work positioner from their harnesses, which are kept in tension whilst in use.



SINGLE POINT ANCHORAGE FOR ONE USER FALL ARREST

Each anchorage is also suitable for one person working in fall arrest, using a self retracting lifeline directly between harness and anchorage point.

DESIGN, PLANNING AND TECHNICAL SUPPORT

A fall protection or work restraint system will provide a safe working environment when the areas of potential danger from falls from height are recognised, and the personal safety system is planned by identifying anchorage points locations for running lines or fall arrestors.

Working from a design brief and floor level plans, a Scissorsafe technician will prepare setting-out plans showing void former positions.

