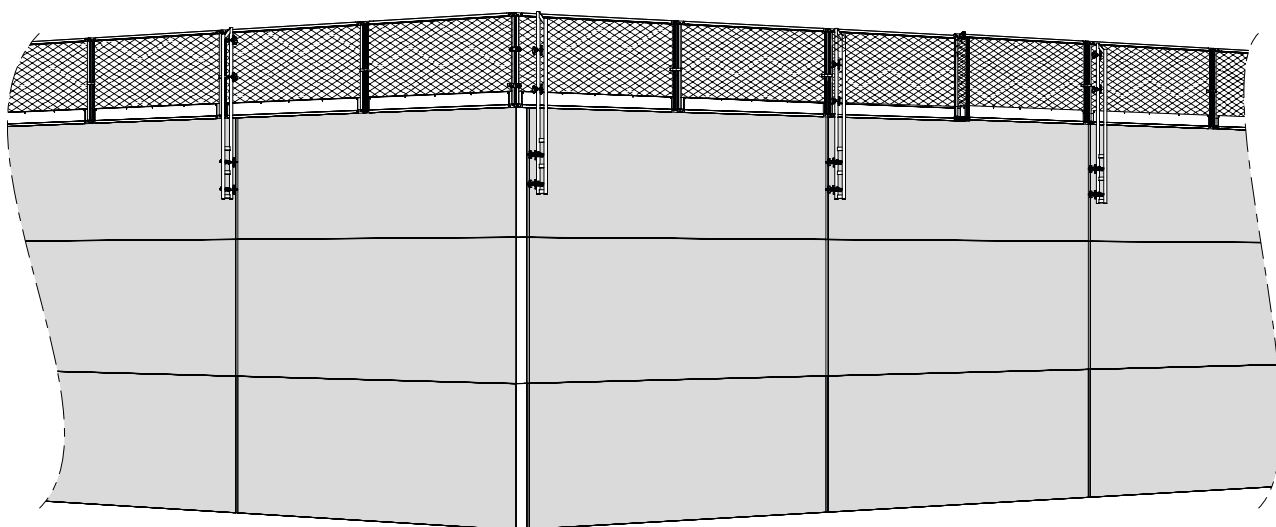


HALL SYSTEM

USER MANUAL



CONTENT

- General information 3
- Safety 3
- Check material 3
- Components..... 4
- Limitations 6
- Attachment and preparation 7
- Mounting 9
- Adjustment 13
- Dismantling..... 14
- Safetycheck..... 16

GENERAL INFORMATION

SafetyRespect Hall system is an edge protection system developed for flat roofs and low sloped roofs on hall buildings for industry, sports, commerce and other large buildings. The system has multiple fastening options and can handle up to six meters span between the attachment points.

The Hall system consists of a mesh barrier in aluminum and components that provide a fast and safe montage.

Attachments are preferably planned well in advance. Planning ahead allows you to take into account the thickness of wall panels or other building products to be installed, as well as calculate the finished height of the roof, which can change during the project. The frame can then be prepared for the edge protection when it is delivered to the workplace. It is often possible to partially assemble a large part of the details even before the frame is in place.

SAFETY

Make a documented risk assessment and action plan to reduce risks at the worksite. The following risks and measures are always present when installing fall protection:



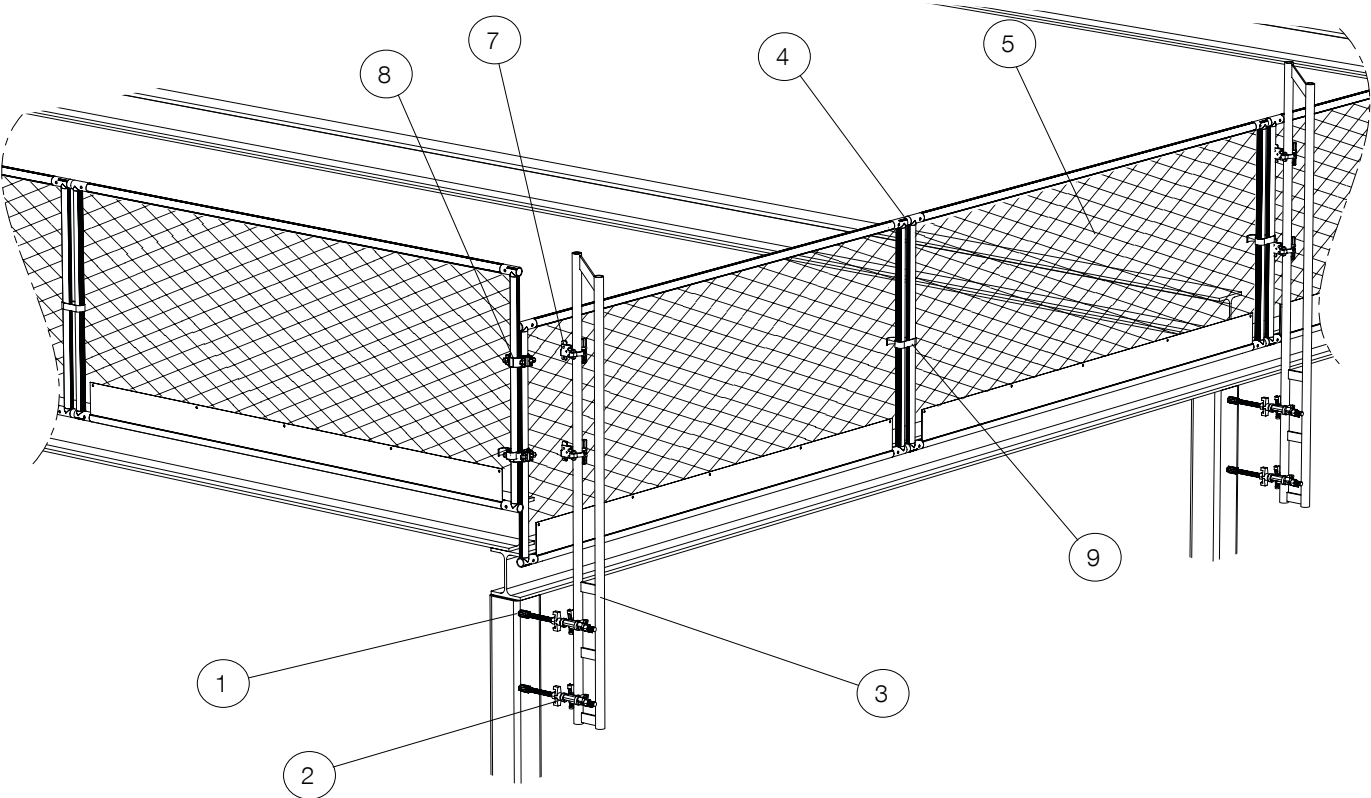
CHECK MATERIAL

Check all parts for mounting. If in doubt, contact a fall protection adviser, replace or discard damaged material.



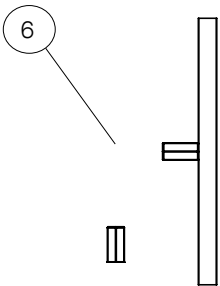
COMPONENTS

INSTALLATION WITH STRAIGHT POSTS



HALL SYSTEM

NO	ART.NO	DESCRIPTION	WEIGHT
1	914148	Weld nut 20	0,2 kg
	914154	Plate – centre 140 × 140	1,1 kg
	914155	Plate – side 140 × 140	1,1 kg
2	914156	Rod 20 complete 0,5 m	3,3 kg
	914157	Rod 20 complete 1 m	6,6 kg
3	911121	Post 2,5 m alu	7,8 kg
4	914050	Barrier joint	1 kg
5	910122	Barrier alu 3 m, h=1,3 m	17,2 kg

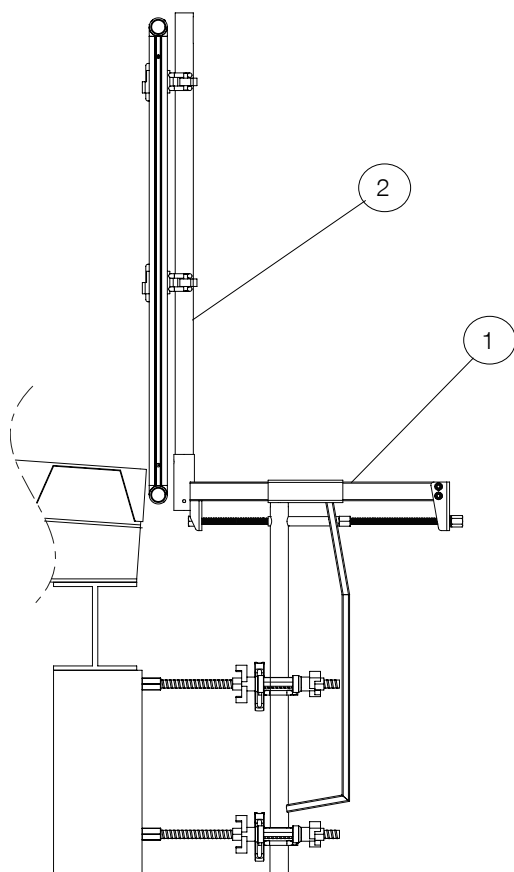


ACCESSORIES

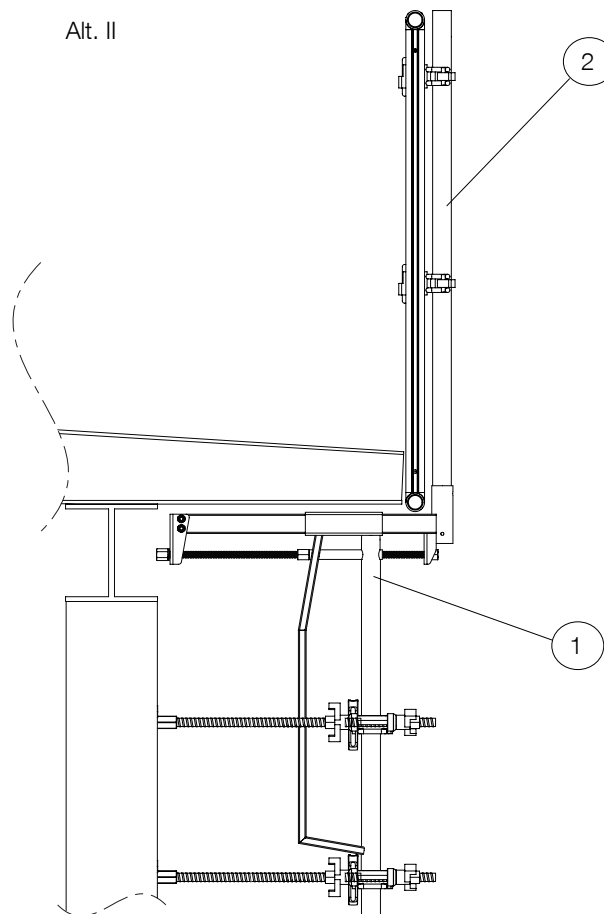
NO	ART.NO	DESCRIPTION	WEIGHT
6	910200	Assembly tool for rod 20	1,5 kg
7	919015	Barrier bracket wedge coupler	1,1 kg
8	915108	Double coupler swivelling (screw)	1,1 kg
9	919206	Strap 0,6 m	0,7 kg

ADJUSTABLE POST HOLDER

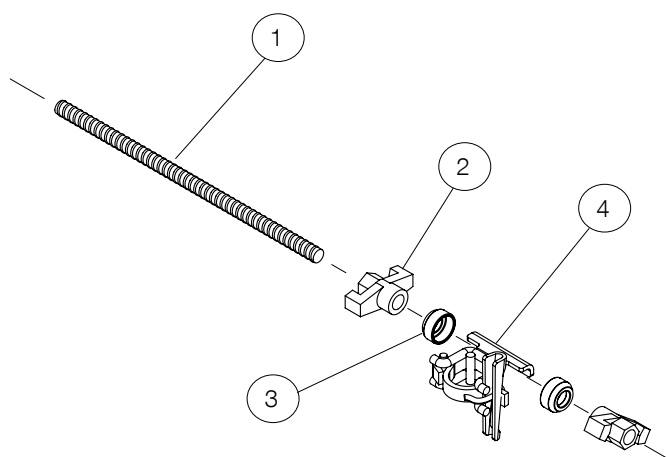
Alt. I



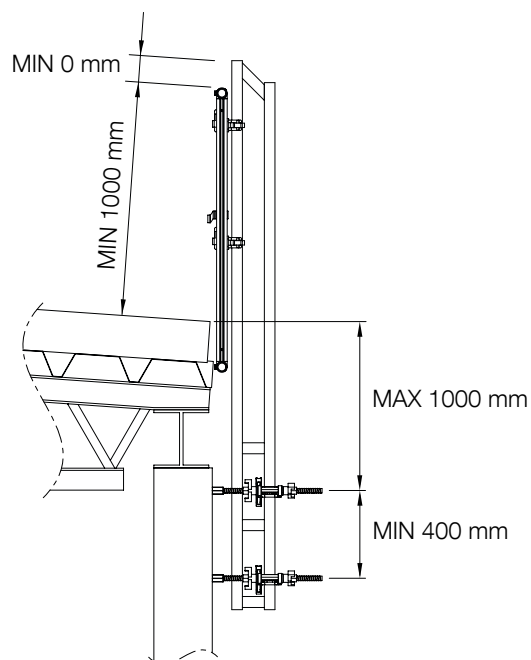
Alt. II



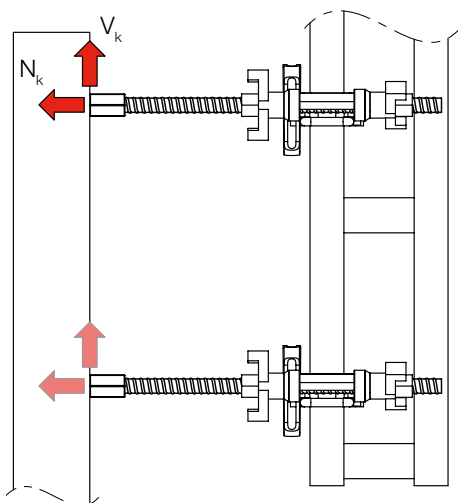
ROD 20 COMPLETE



NR	ART.NR	BESKRIVNING	VIKT
1	914158	Rod 20 0,5 m	1,3 kg
	914145	Rod 20 1,0 m	2,5 kg
2	914146	Wing nut 20	0,7 kg
3	914134	Socket 20	0,1 kg
4	914142	Coupler with bracket	1,0 kg



REACTION



EDGE DISTANCE



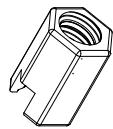
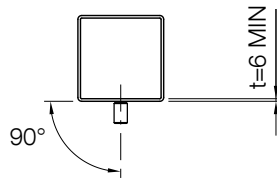
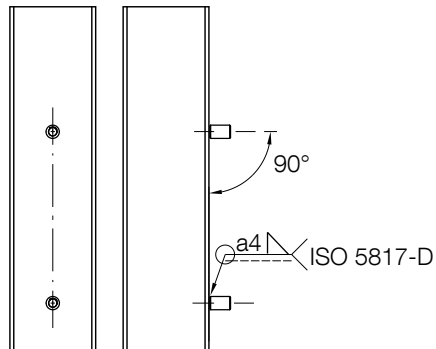
6 | SAFETYRESPECT.COM

ATTACHMENT AND PREPARATION

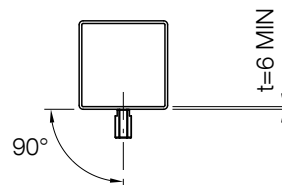
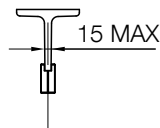
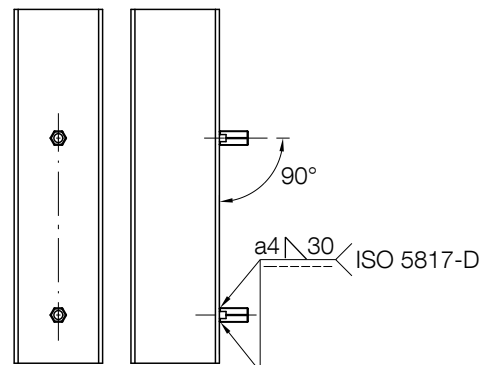
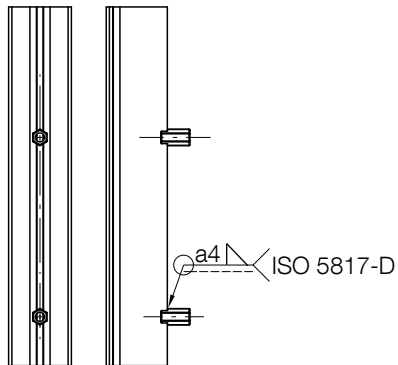
WELD ATTACHMENT



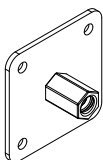
914147



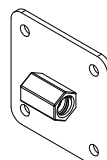
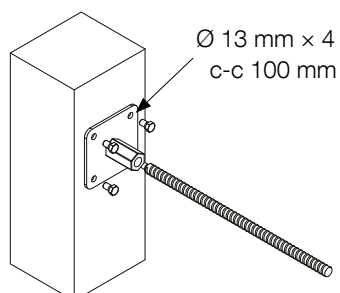
914148



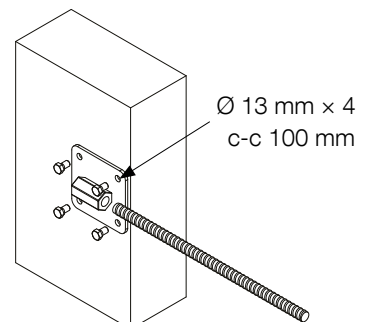
SCREW ATTACHMENT



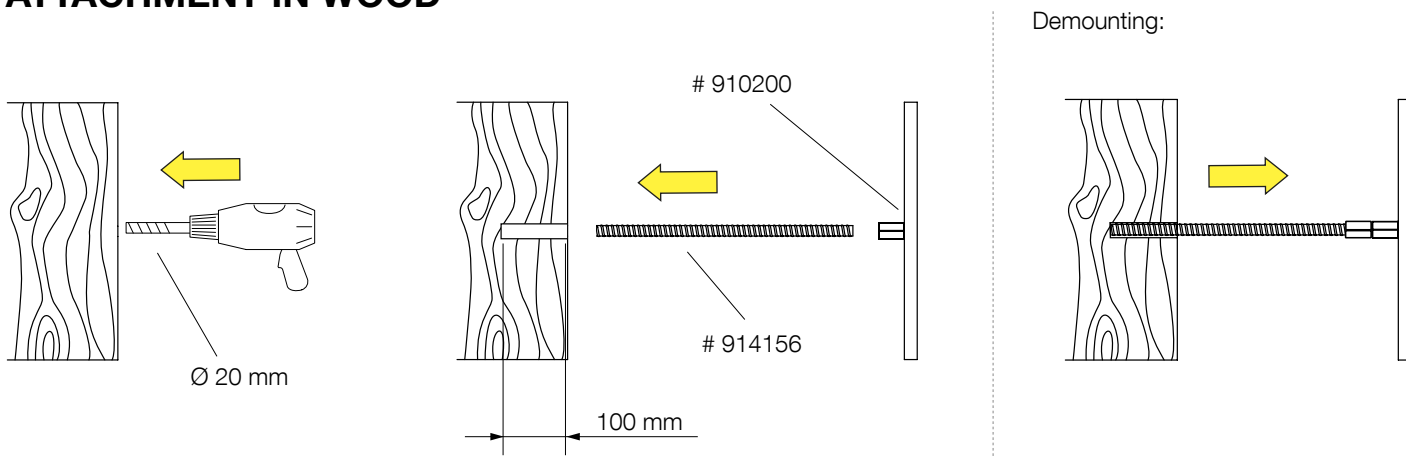
914154



914155

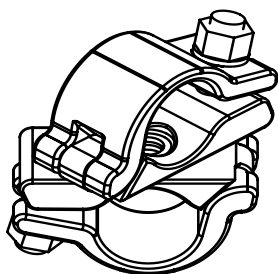


ATTACHMENT IN WOOD

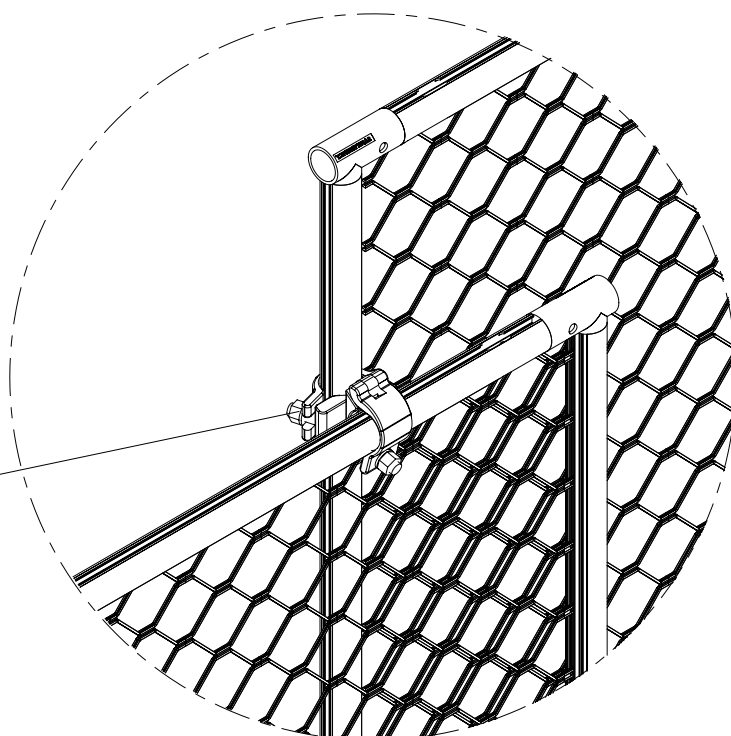


SEGMENTATION

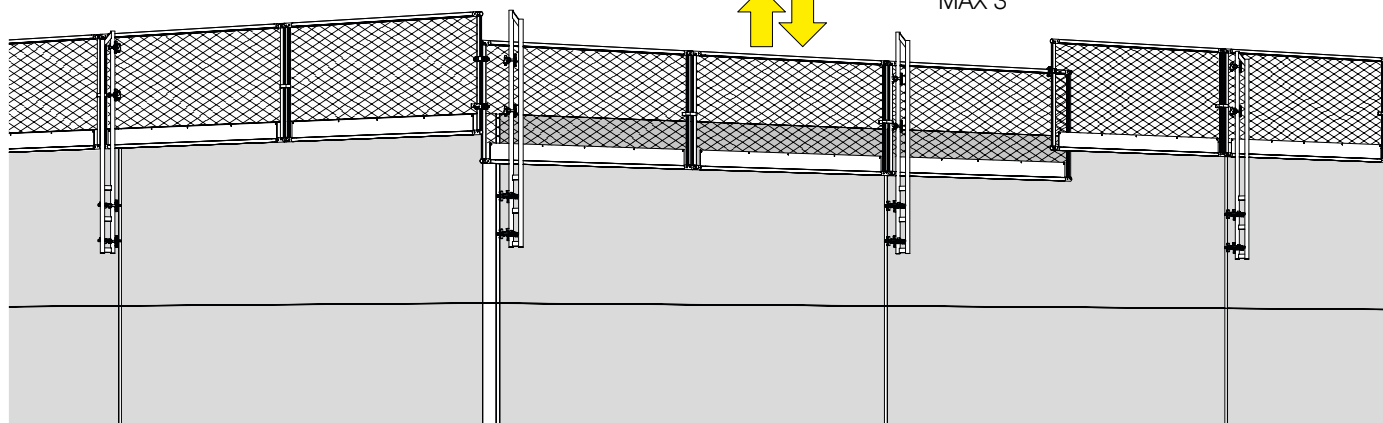
If there is a need to temporarily open or raise the barrier during the project period, eg for intake of insulation, stair towers or other construction products, be sure to mount the barriers with overlap on selected sides of the building from the start. Maximum three barriers linked.



915108

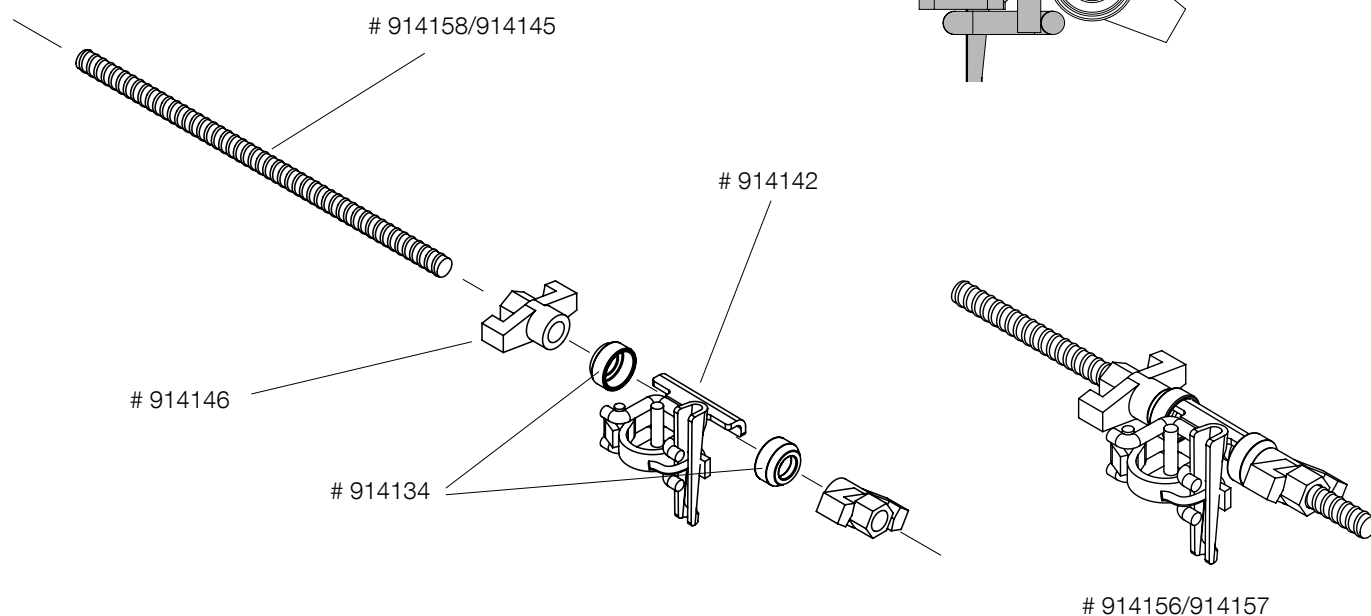


MAX 3



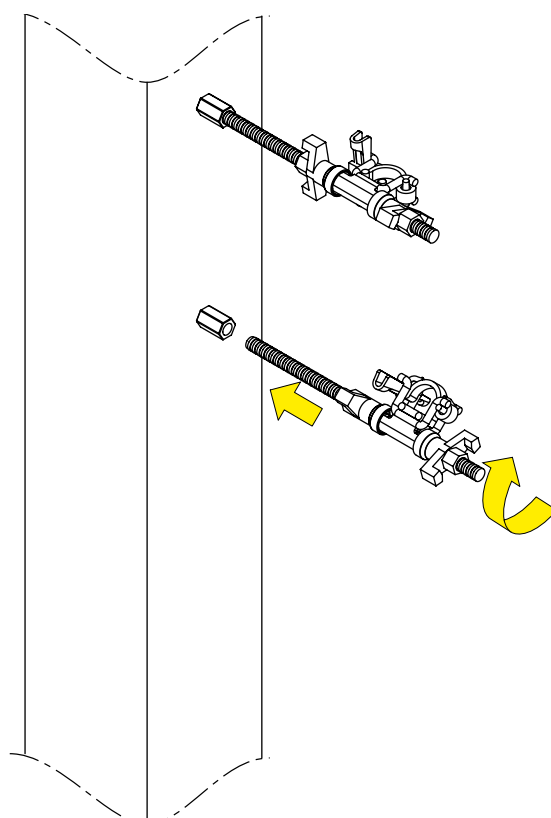
MOUNTING

1. Check that Rod 20 complete is properly assembled and that the Coupler with bracket is held in place by the sockets.

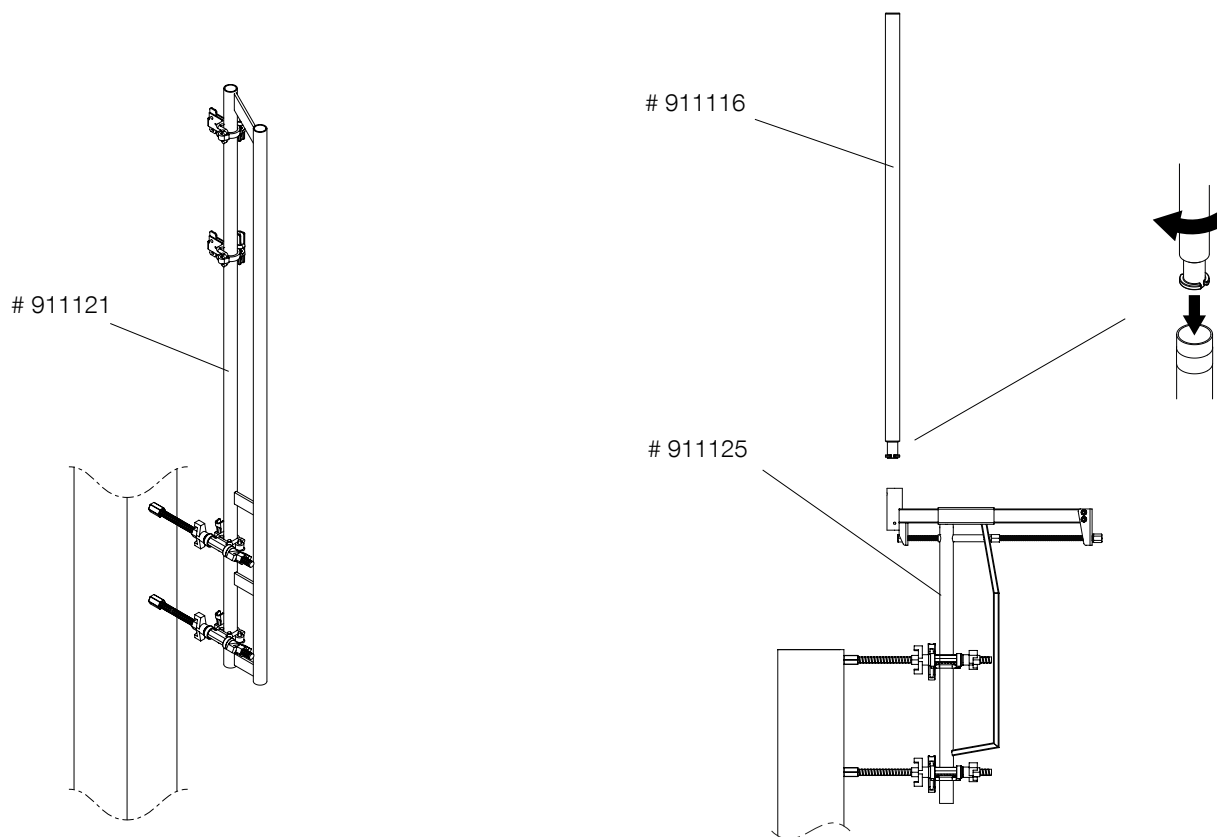


2.

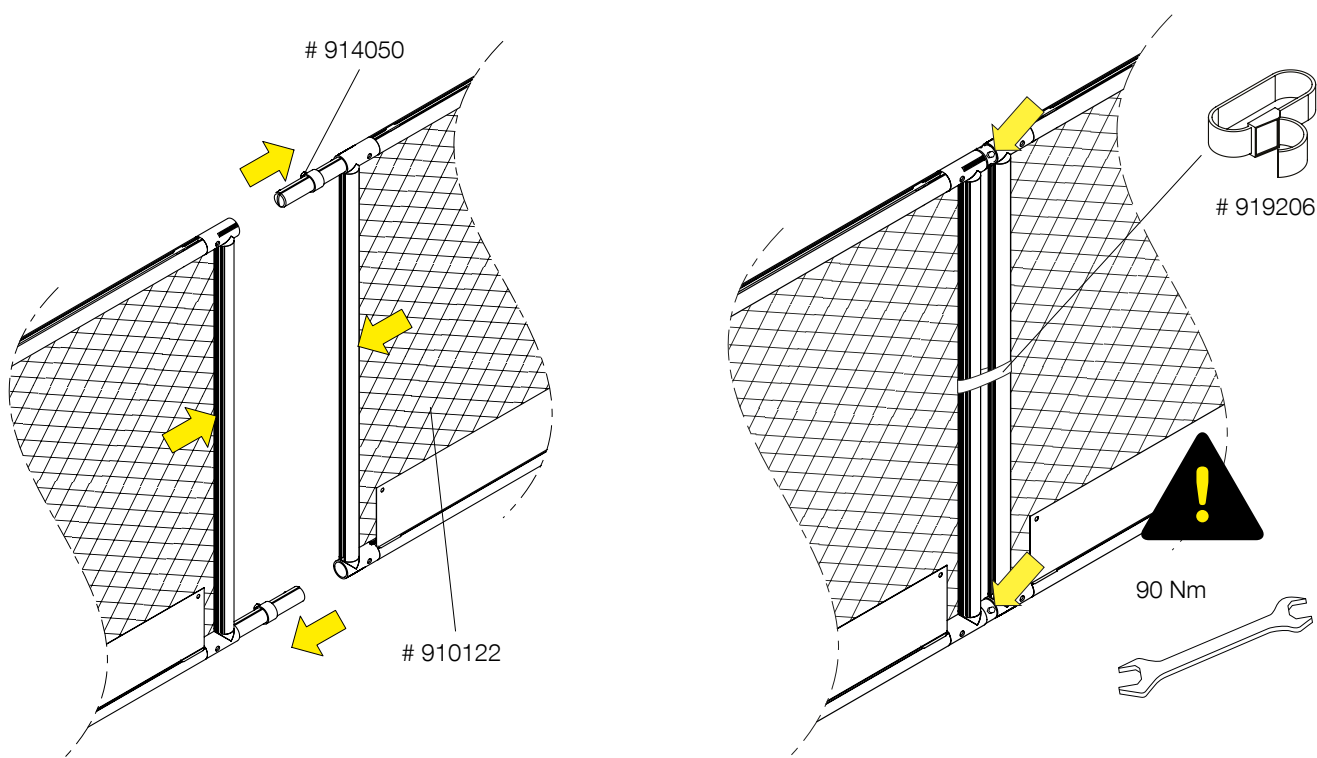
Mount Rod 20 complete in the attachments (mounting of the attachments is shown on page 7).



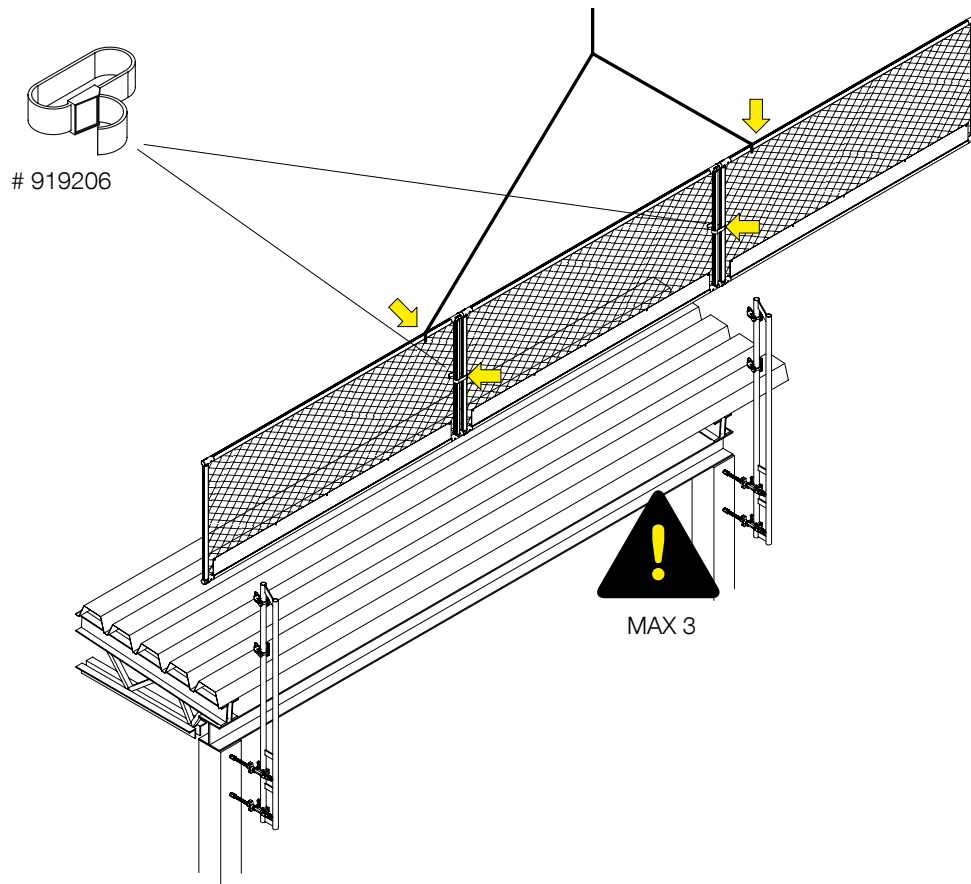
3. Mount Post 2,5 m alu or Adjustable post holder and Post alu 1,5 m.



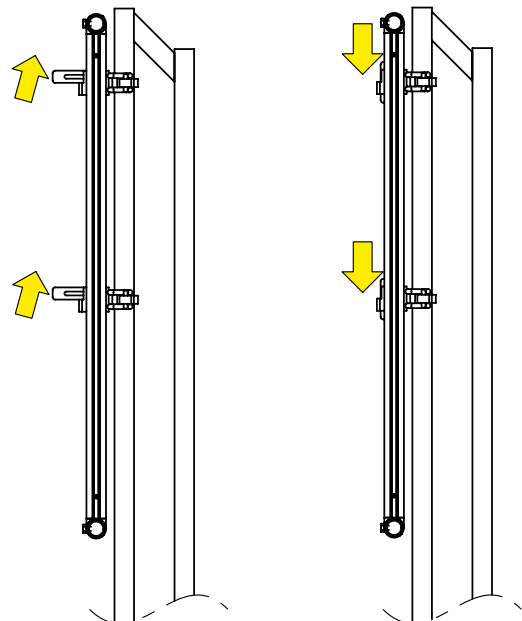
4. Join the barriers with Barrier joint and straps.



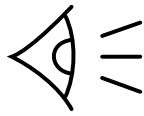
- 5.** Attach the barriers to the posts. Max. 3 barriers at a time.



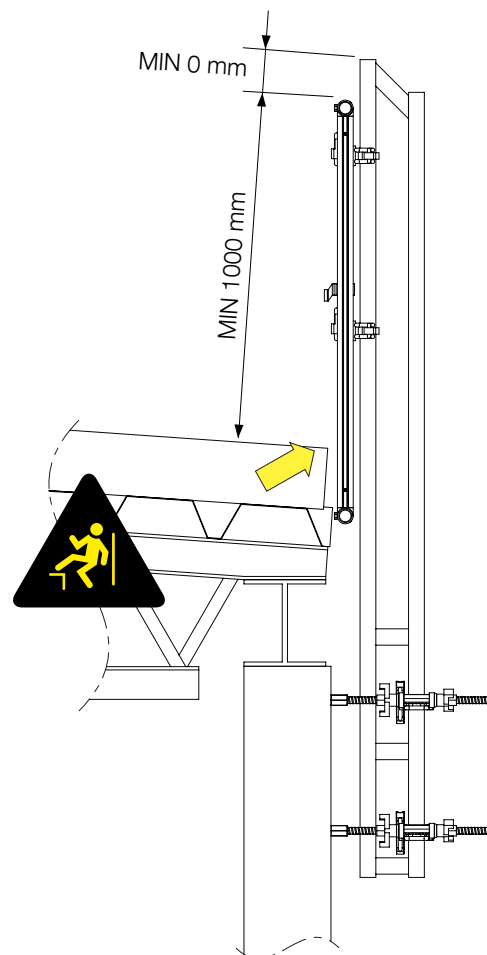
- 6.** Close the barrier locks.



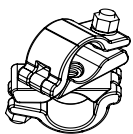
7.



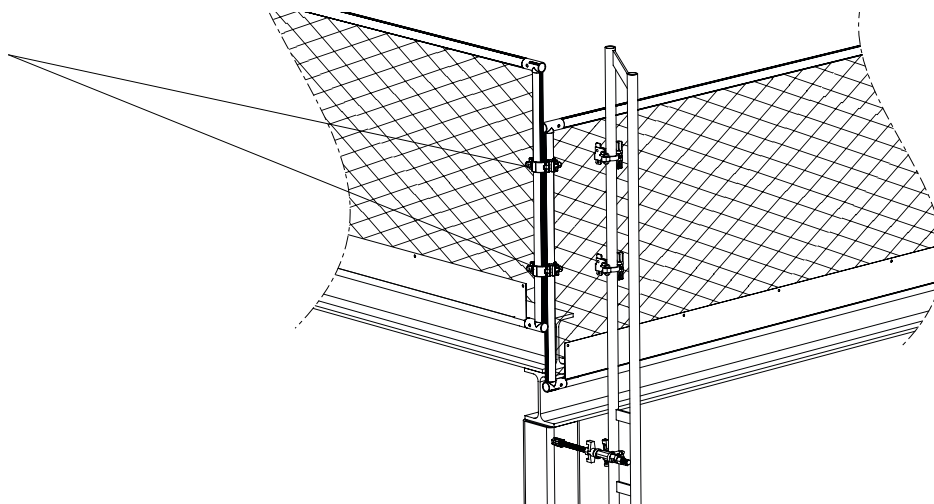
Check the height of the barrier, and look for any gaps.



8. Start mounting at the corners. Use **Double coupler swivelling (screw)** to attach the barriers to each other.

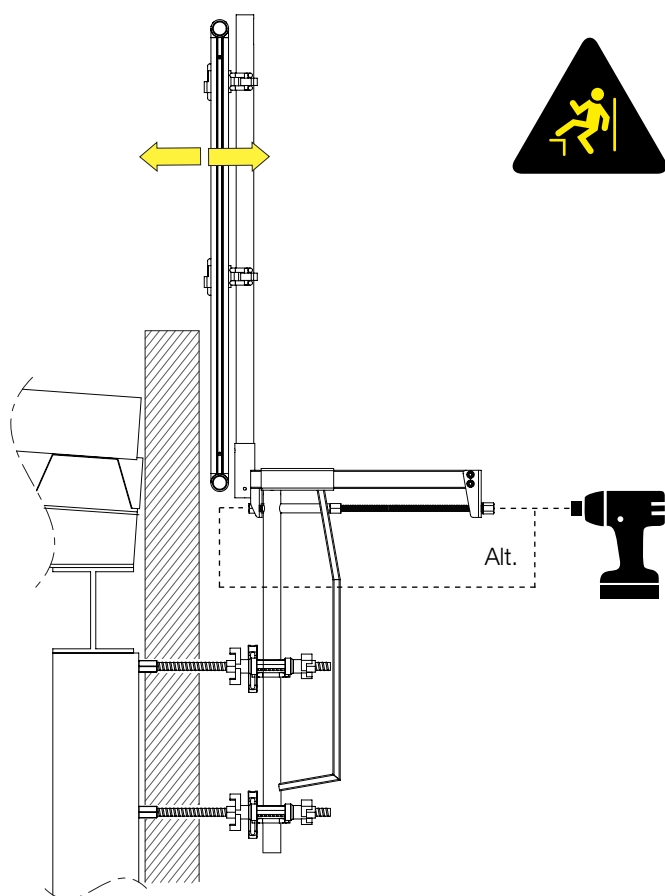


914152

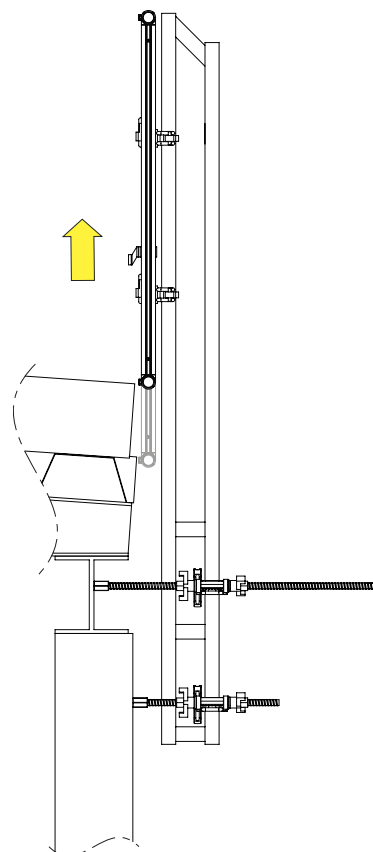


ADJUSTMENT

Temporarily adjust the edge protection when mounting e.g. wall elements.

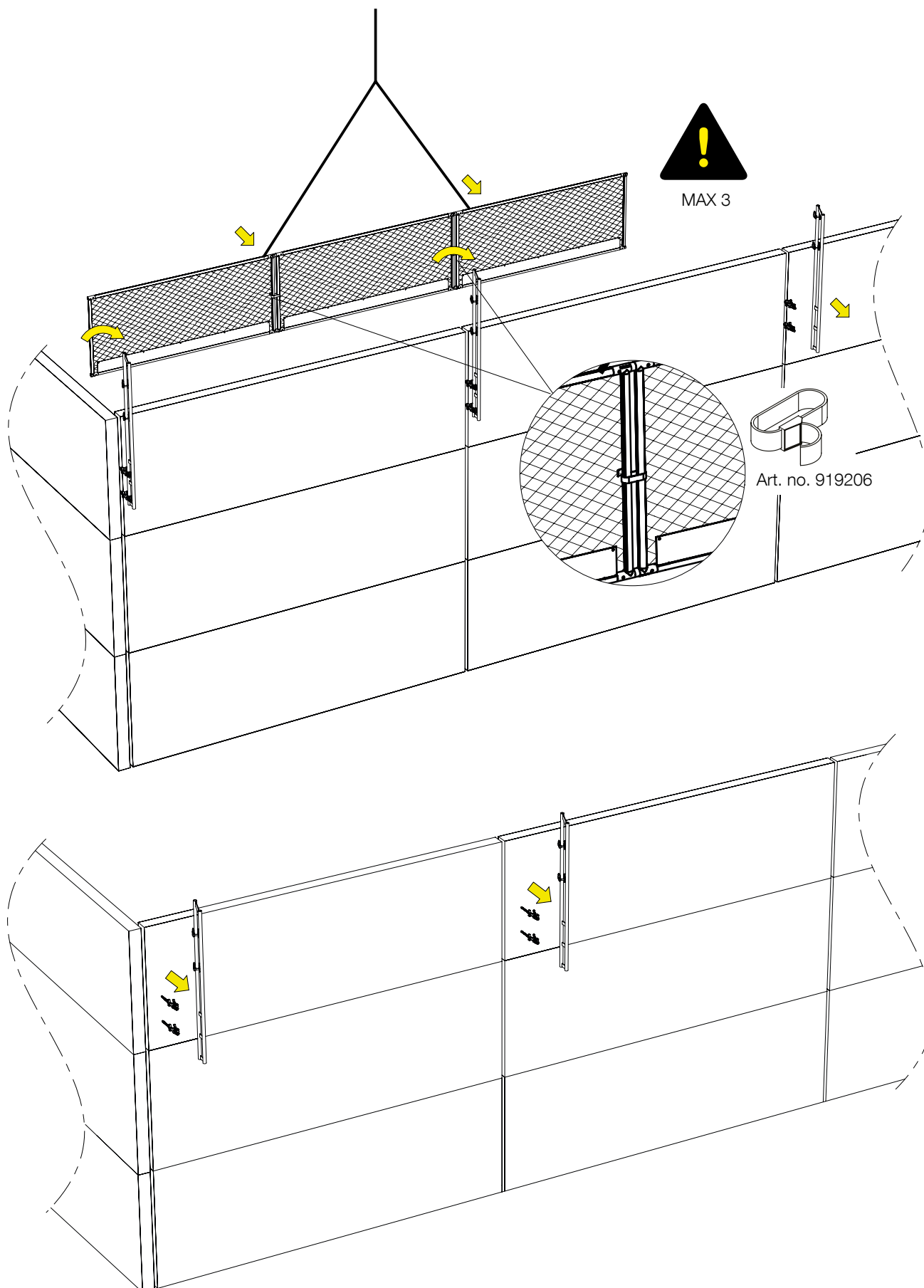


For thicker insulation, the edge protection may need to be adjusted in height. Then it must be sectioned (see page 8).



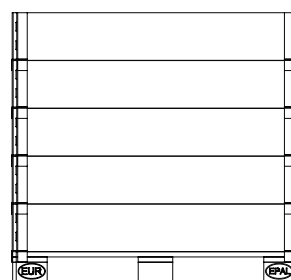
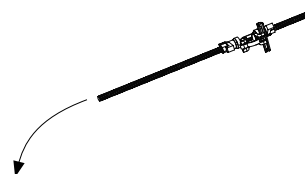
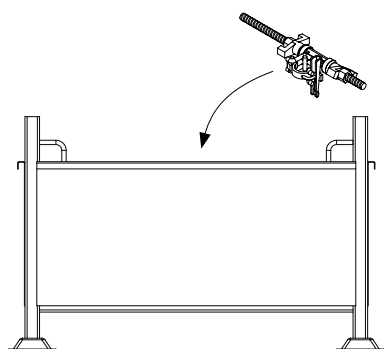
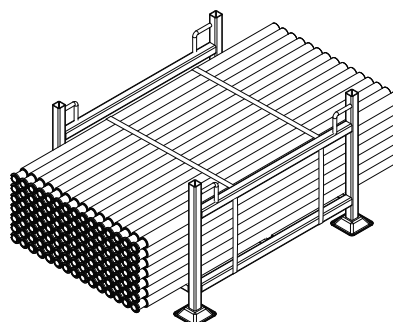
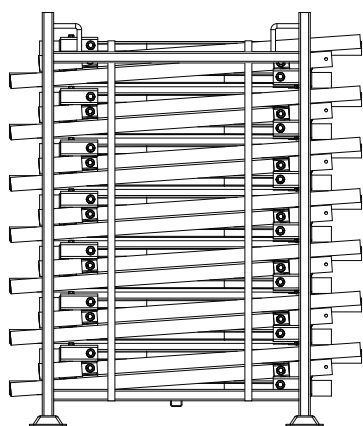
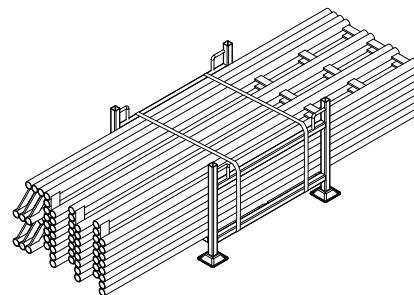
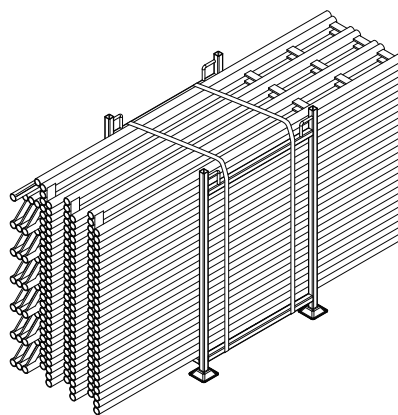
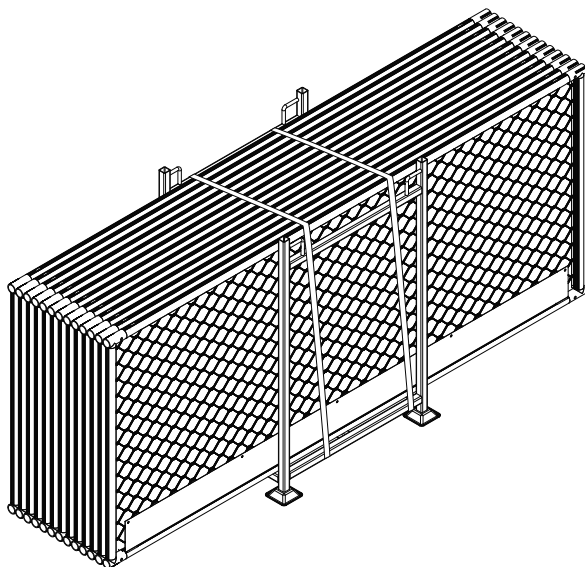
DISMANTLING

Dismantle the Hall system in reverse order. Dismantle and arrange details with care, in the order they were delivered to the construction site, and you will have an effective unprovisioning.



RE PACK

Secure material/goods before transportation!



SAFETYCHECK HALL SYSTEM

You can also do the SafetyCheck directly in our mobile app.
Available for Android and iPhone.

WORKPLACE		DATE	
Location		Order no.	
Site manager		Check no.	

SITE/PART OF BUILDING			
1		3	
2		4	

CHECK POINTS	YES	NO	REFERENCE	REMARKS
Are the current installation instructions available?			User manual Hall system	
Have the recommended safety measures been taken?			Page 3	
Are the components undamaged?			Page 3	
Is the distance between the attachment points a maximum of 6 m?			Page 6	
Are the attachments planned and executed according to instructions?			Page 6–7	
Is the basis for fixings strong enough for the loads?			Page 6	
Is the distance between attachments and work surface according to instructions?			Page 6	
Is the risk of stepping through the work surface and fall averted?			Page 6	
Have overlaps been created with Double coupler swivelling (screw)?			Page 8	
Are the posts correctly fitted in the brackets?			Page 10	
Are the barriers mounted correctly (Inside of posts, toe board downward and decal outward)?			Page 11	
Are Barrier joints used to connect the barriers, and are the barriers strapped together?			Page 10–12	
Are the barriers properly locked with the post locks?			Page 11	
Is the top rail of the barrier at least 1 m above the work surface?			Page 6, 12	
Are posts mounted in all corners?			Page 12	
Are Double coupler swivelling (screw) used in all corners?			Page 12	
Are the barriers mounted without gaps at the corners?			Page 12	

CHECKING THE ABOVE CHECKLIST CONDUCTED BY			
Date		Signature	