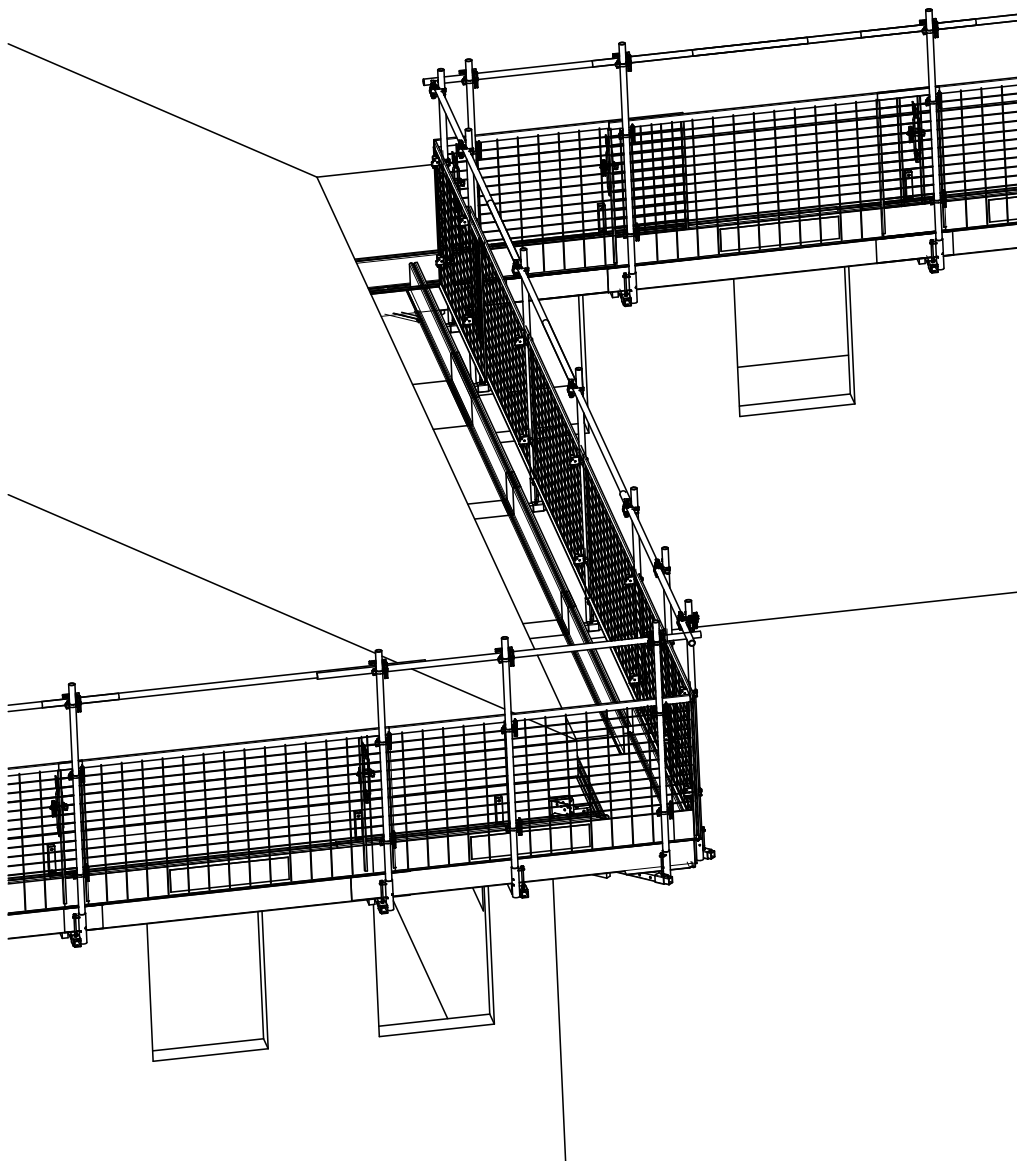


FLEX WORKING PLATFORM

MANUAL



CONTENT

- General information 3
- Safety 3
- Check material 3
- Components..... 4
- Dimensions and loads 6
- Attachments 7
- Mounting 8
- Mounting in corners 10
- Demounting 10
- Placing..... 11
- Marking..... 12
- Classifications 12
- Maintenance..... 13
- SafetyCheck 14

GENERAL INFORMATION

SafetyRespect Flex working platform is an alternative to scaffolding that can be adapted for attachment to facades and roofs, among other things. It is used during facade and roofing works where scaffold is not desirable or can be used for various reasons. Flex working platform is dimensioned for load classes 2 and 3 according to EN 12811-1, depending on configuration.

Prior to work in the working platform, a risk assessment must be made. Some of the risks are the risk of slipping and overloading. These risks can be addressed through, among other things, the following points:

- Never jump into the working platform.
- Work only one person per console.
- Check the current scaffold class and follow the load regulations.
- It is not permitted to use the Flex working platform as an anchorage point for personal fall protection equipment.

- Do not make changes the Flex working platform or its components.
- Take caution in wet, rainy, and snowy conditions.
- Remove any snow and ice from the working platform.
- Check any components if subjected to an accident or excessive load.

The Flex working platform must not be used in configurations, or, with products other than those prescribed in this manual, unless a specific risk assessment and dimensioning calculations have been made and handed over to the user.

If the working platform or barriers is made denser with fabric, wooden construction or the like, the load from wind will increase, with the risk of larger loads than the working platform is dimensioned for.

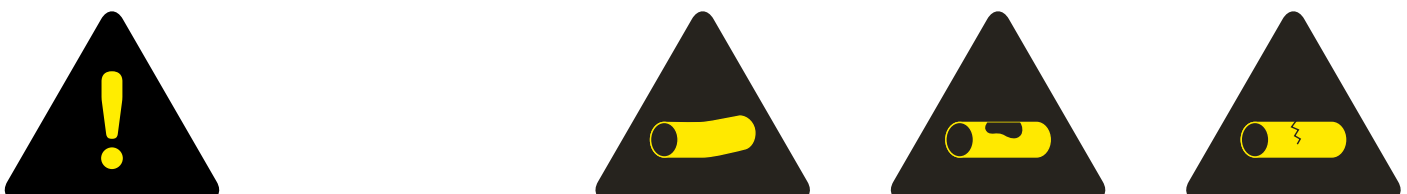
SAFETY

To reduce risks at the worksite, make a documented risk assessment and action plan. The following risks and measures are always present when installing fall protection:



CHECK MATERIAL

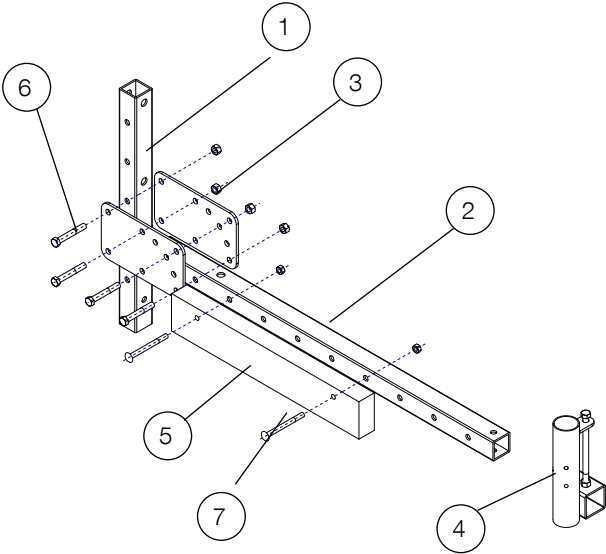
Check all parts for mounting. If in doubt, contact the fall protection adviser, replace, or discard damaged material.



COMPONENTS

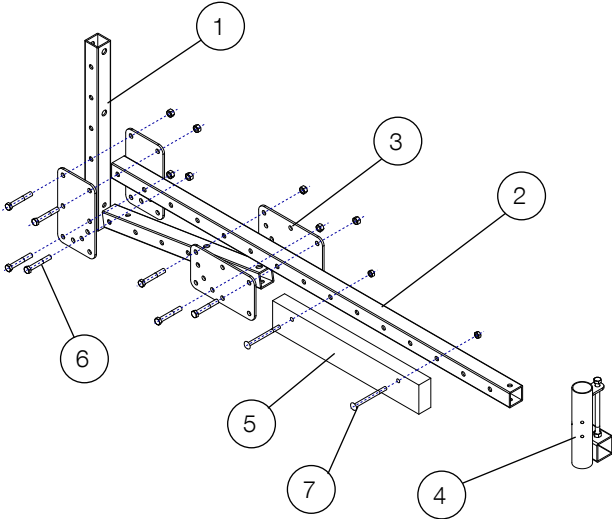
FLEX WORKING PLATFORM WALL

POS	ART. NO	DESCRIPTION	WEIGHT	QTY
1	914560	Flex beam 600	3,3 kg	1 pcs
2	914510	Flex beam 1000	4,5 kg	1 pcs
3	914100	Flex angle plate	1,5 kg	2 pcs
4	914121	Flex post bracket	1,9 kg	1 pcs
5	-	Wooden beam	-	1 pcs
6	-	M12 screw assembly	-	4 pcs
7	-	M10 carriage bolt assembly	-	2 pcs



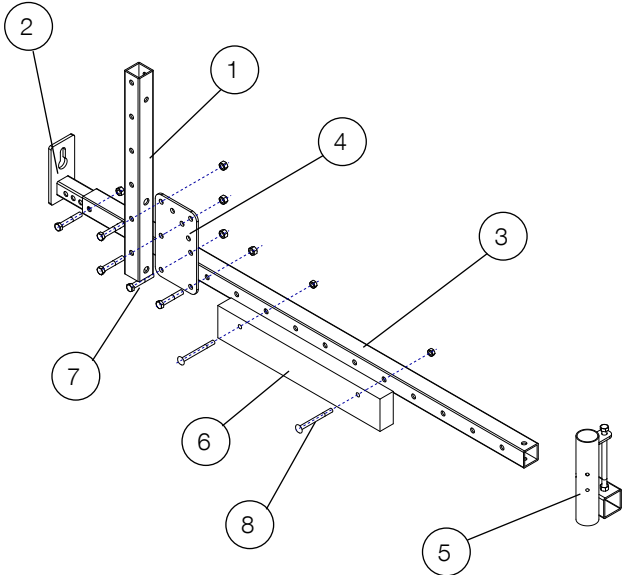
FLEX WORKING PLATFORM WALL EXTENDED

POS	ART. NO	DESCRIPTION	WEIGHT	QTY
1	914560	Flex beam 600	3,3 kg	2 pcs
2	914515	Flex beam 1500	6,7 kg	1 pcs
3	914100	Flex angle plate	1,5 kg	4 pcs
4	914121	Flex post bracket	1,9 kg	1 pcs
5	-	Wooden beam	-	1 pcs
6	-	M12 screw assembly	-	7 pcs
7	-	M10 carriage bolt assembly	-	2 pcs



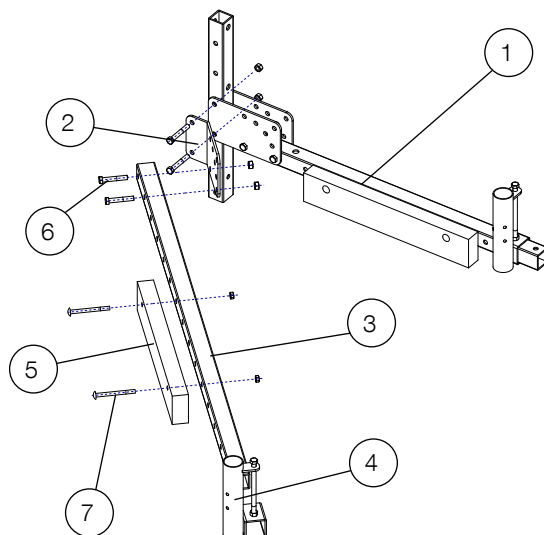
FLEX WORKING PLATFORM EAVES

POS	ART. NO	DESCRIPTION	WEIGHT	QTY
1	914560	Flex beam 600	3,3 kg	1 pcs
2	914102	Flex key console	1,3 kg	1 pcs
3	914515	Flex beam 1500	6,7 kg	1 pcs
4	914100	Flex angle plate	1,5 kg	1 pcs
5	914121	Flex post bracket	1,9 kg	1 pcs
6	-	Wooden beam	-	1 pcs
7	-	M12 screw assembly	-	5 pcs
8	-	M10 carriage bolt assembly	-	2 pcs



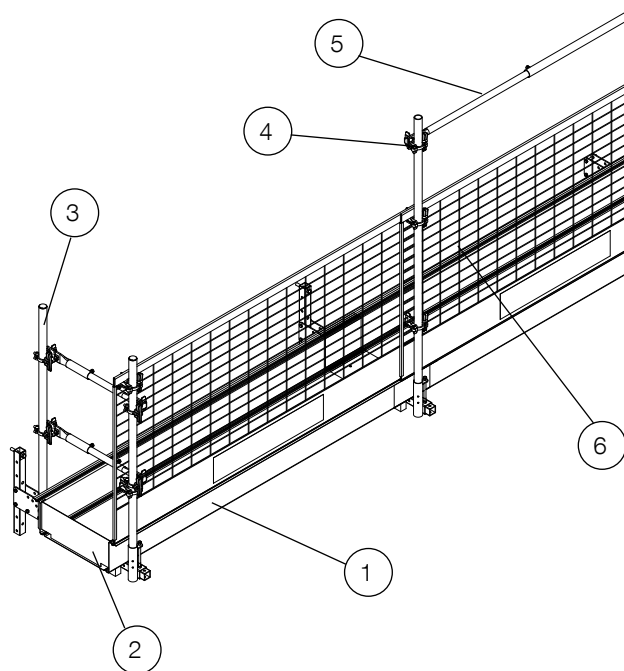
CORNER CONSOLE FLEX WORKING PLATFORM

POS	ART. NO	DESCRIPTION	WEIGHT	QTY
1	981119	Flex working platform wall	15 kg	1 pcs
2	914101	Flex angle plate corner	1,5 kg	1 pcs
3	914515	Flex beam 1500	6,7 kg	1 pcs
4	914121	Flex post bracket	1,9 kg	1 pcs
5	-	Wooden beam	-	1 pcs
6	-	M12 screw assembly	-	2 pcs
7	-	M10 carriage bolt assembly	-	2 pcs



ACCESSORIES*

POS	ART. NO	DESCRIPTION	WEIGHT
1	981123	Flex walk way	27,8 kg
	981124	Flex walk way right (green)	26,2 kg
	981125	Flex walk way left (red)	26,2 kg
2	981126	Flex walk way end plate	1,1 kg
3	911110	Post 1,3	3,6 kg
	911116	Post 1,5, alu	2,5 kg
	911117	Post 2,0, alu	3,2 kg
4	919015	Barrier bracket wedge coupler	1,1 kg
	919016	Barrier bracket wedge coupler dbl.	1,7 kg
	-	Pipe coupler**	-
5	913322	Adjustable link bars 0,58-0,78	3,0 kg
	913321	Adjustable link bars 0,96-1,50	4,3 kg
	913320	Adjustable link bars 1,50-2,50	6,2 kg
	913330	Adjustable link bars 2,4-3,5	9,0 kg
	910118	Alu pipe 1 m	1,5 kg
	910117	Alu pipe 2 m	3,0 kg
	910116	Alu pipe 3 m	4,5 kg
	910115	Alu pipe 4 m	6,0 kg
	910120	Alu pipe 5 m	7,5 kg
	910114	Alu pipe 6 m	9,0 kg
6	913121	Barrier 1,3	10,8 kg
	913131	Barrier 1,95	15,1 kg
	913111	Barrier 2,6	19,7 kg



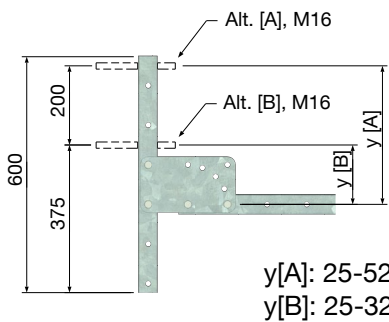
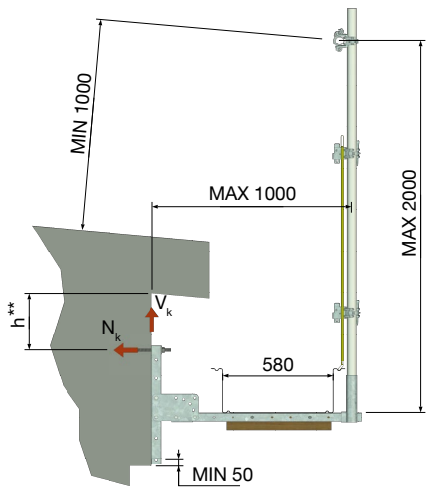
* Special requests, such as unique configurations, or wider platforms using planks etc., must be checked and approved by SafetyRespect.

** Pipe couplers used within the system should be tested and certified according to EN 74-1

DIMENSIONS AND LOADS

FLEX WORKING PLATFORM WALL

Dimensioned according to EN12811-1, load class 2 (1500 N/m²) and 3 (2000 N/m²).

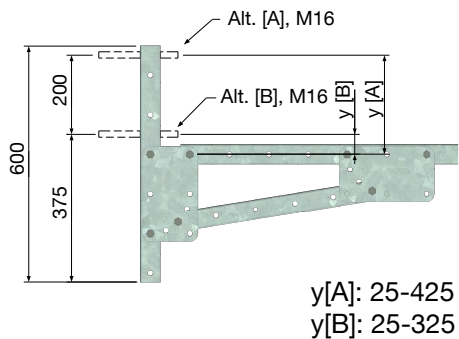
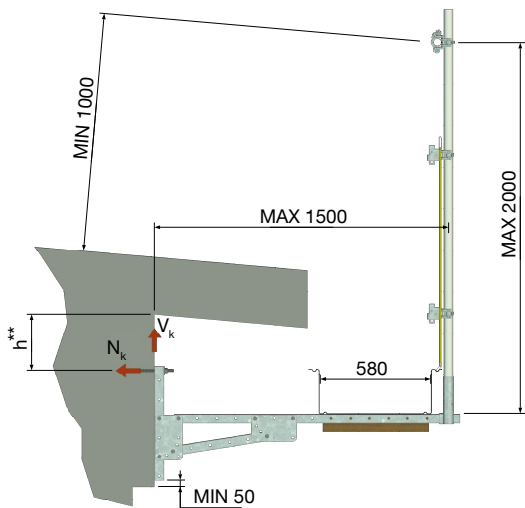


y[A]: 25-525
y[B]: 25-325

[mm]

FLEX WORKING PLATFORM WALL – EXTENDED

Dimensioned according to EN12811-1, load class 2 (1500 N/m²).



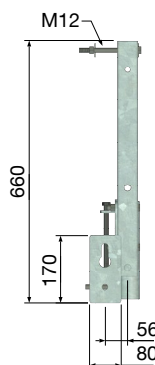
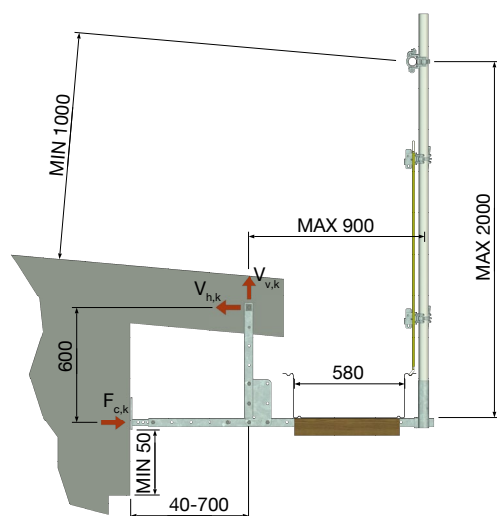
y[A]: 25-425
y[B]: 25-325

[mm]

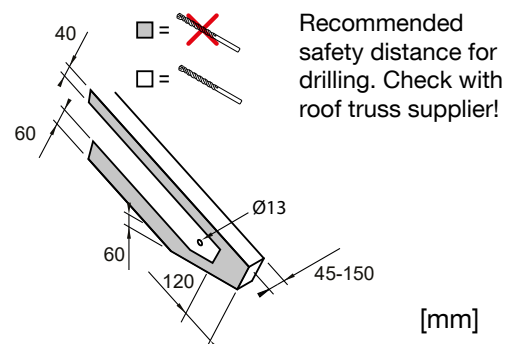
* Unfactored ($Q_{k,i}$). EN 12811-1: $Q_{k,i} \times \gamma_F = E_d < R_d = R_k / \gamma_M (k_{mod})$, where $\gamma_F=1,5$ and where k_{mod} is used for timber.
** h: < 400 mm. Recommended height to ease mounting.

FLEX WORKING PLATFORM EAVES

Dimensioned according to EN12811-1, load class 2 (1500 N/m²) and 3 (2000 N/m²).



ANCHOR LOADS (Q)*	
$V_{h,k}$	4,4 kN
$V_{v,k}$	3,6 kN
$F_{c,k}$	4,0 kN



ATTACHMENTS

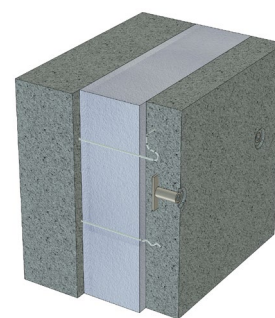
When choosing an attachment, be sure to select an option that meet the required strength based on the recommended dimensioning load-bearing capacity. Check with the supplier which values apply to current fastening options.



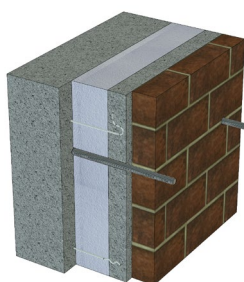
Solid wall with castings.



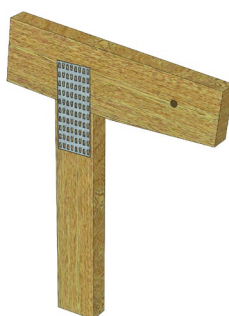
Insulated wall with cast-in-place attachment, cut-out in insulation.



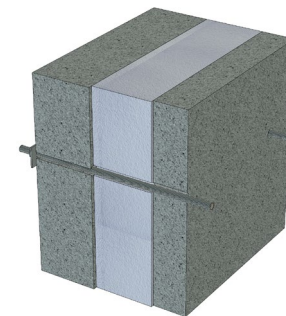
Sandwich wall with castings in outer plate.



Sandwich wall with brick facade. Holes through brick, outer plate and insulation, threaded rod/pin expander attached to inner plate.



Roof eave with predrilled hole



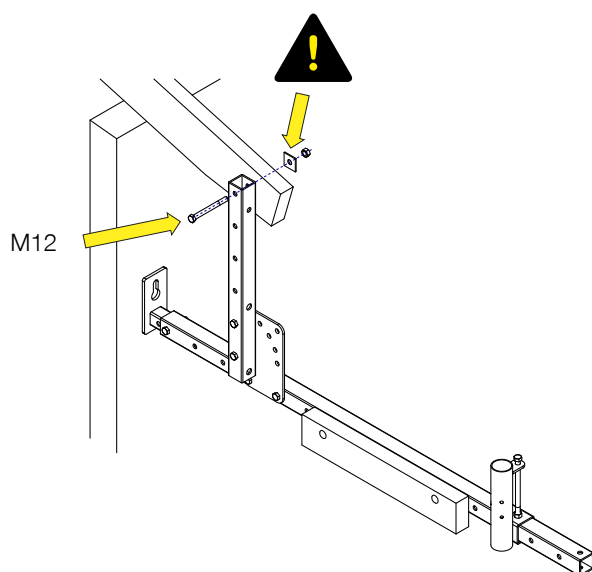
Sandwich wall with through bolt (threaded rod)

MOUNTING

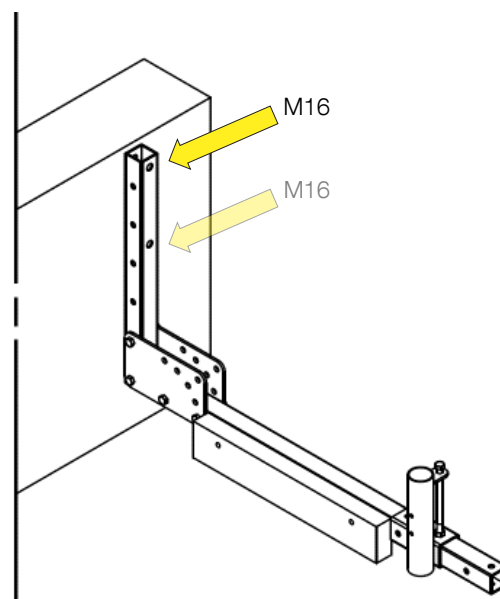
Flex working platform is a special scaffolding construction and thus requires training of the current scaffolding construction for the requirements in AFS 2013: 4 to be considered fulfilled (applicable for Sweden, other countries may require other levels of certification). SafetyRespect offers such training.

A. CONSOLES

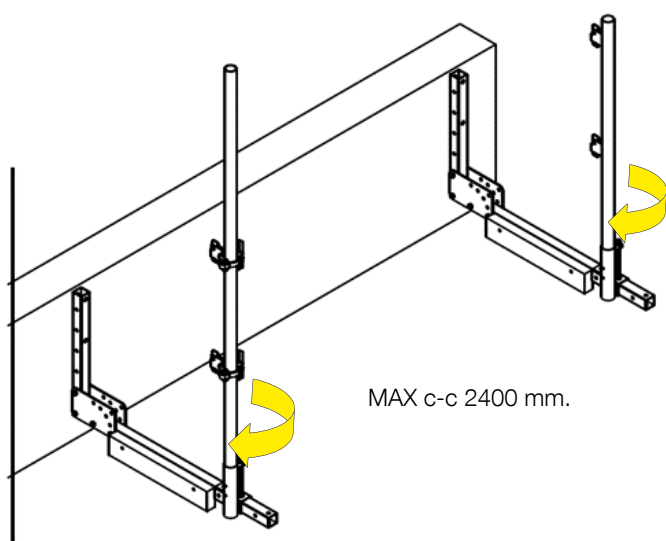
On eave



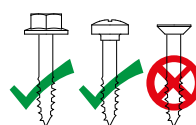
On wall



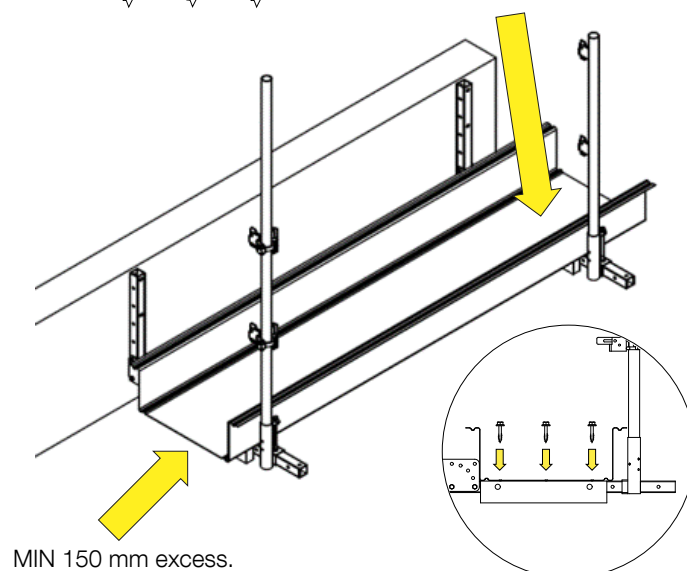
B. POSTS

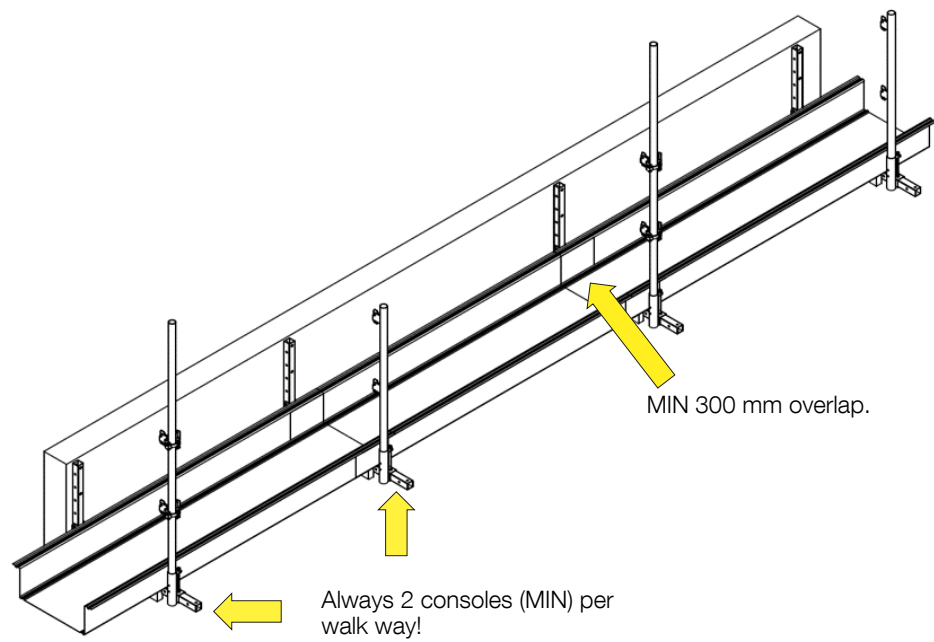


C. WALK WAY



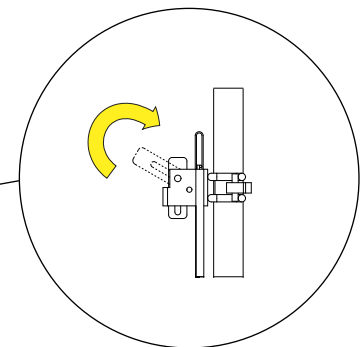
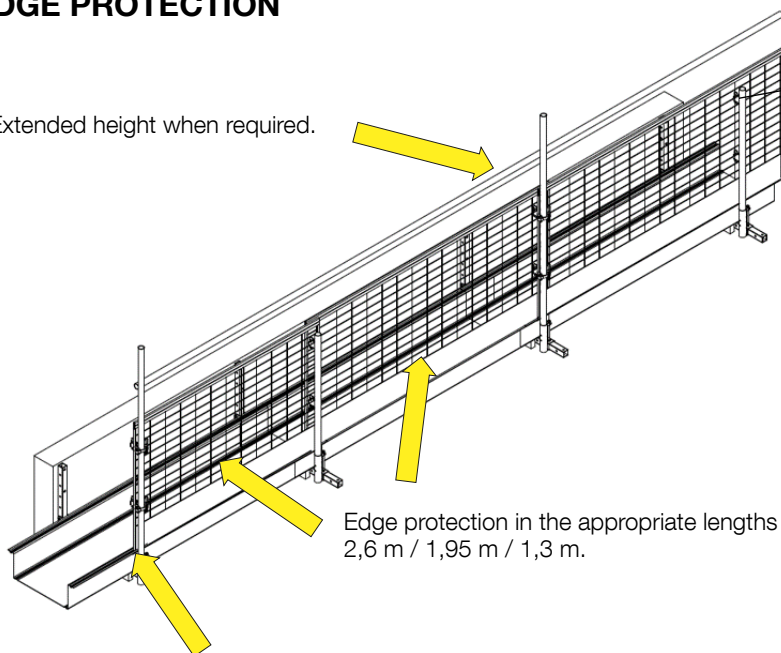
Secure with three screws intended for assembly in wood, MIN Ø 4,5x35 mm in every console.





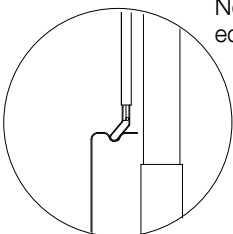
D. EDGE PROTECTION

Extended height when required.

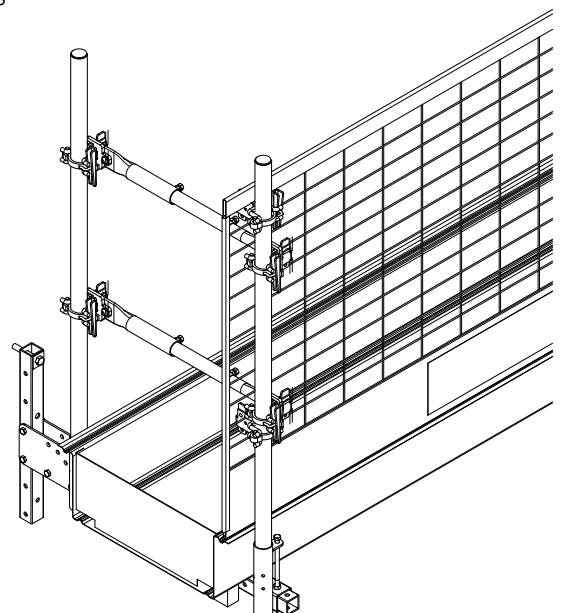


Secure the barriers by flicking the latch to a vertical position.

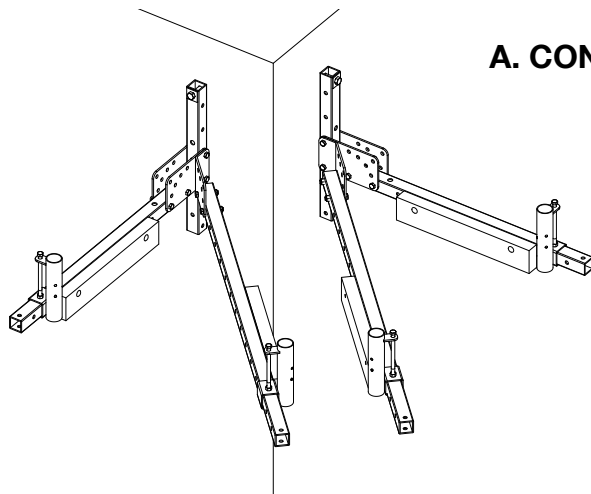
Net is set on top of the edge of the walk way.



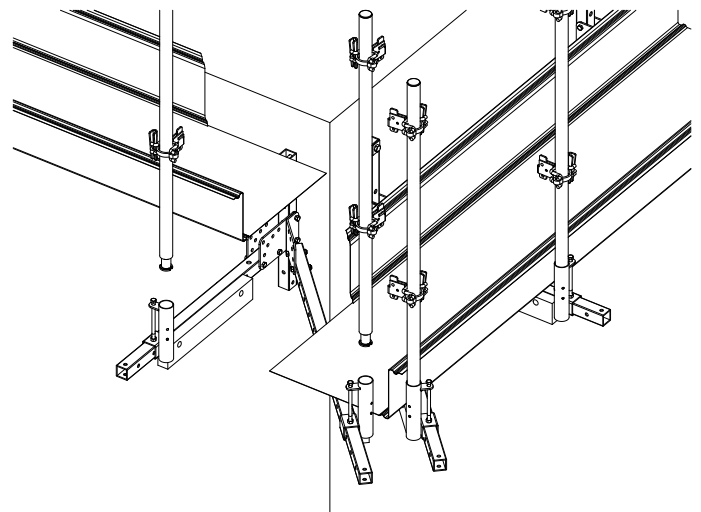
E. COVERING OPEN ENDS



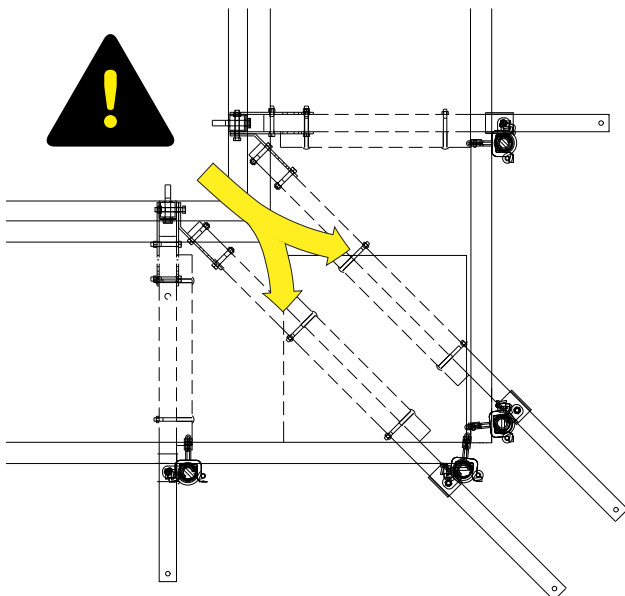
MOUNTING IN CORNERS



A. CONSOLES



B. POSTS



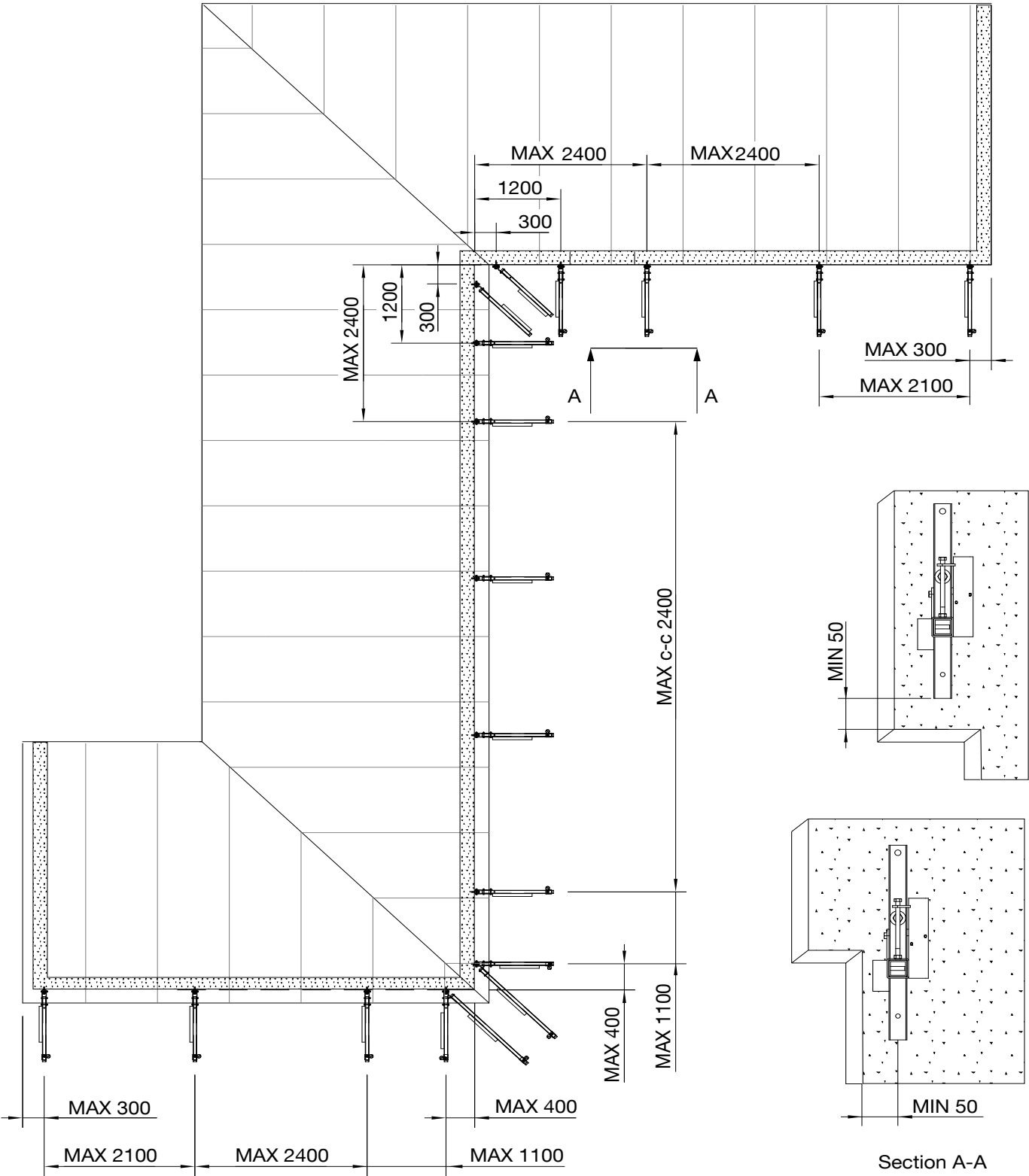
C. WALK WAYS

The walk ways must be overlapping so they can be secured with wooden screws in both diagonal beams.

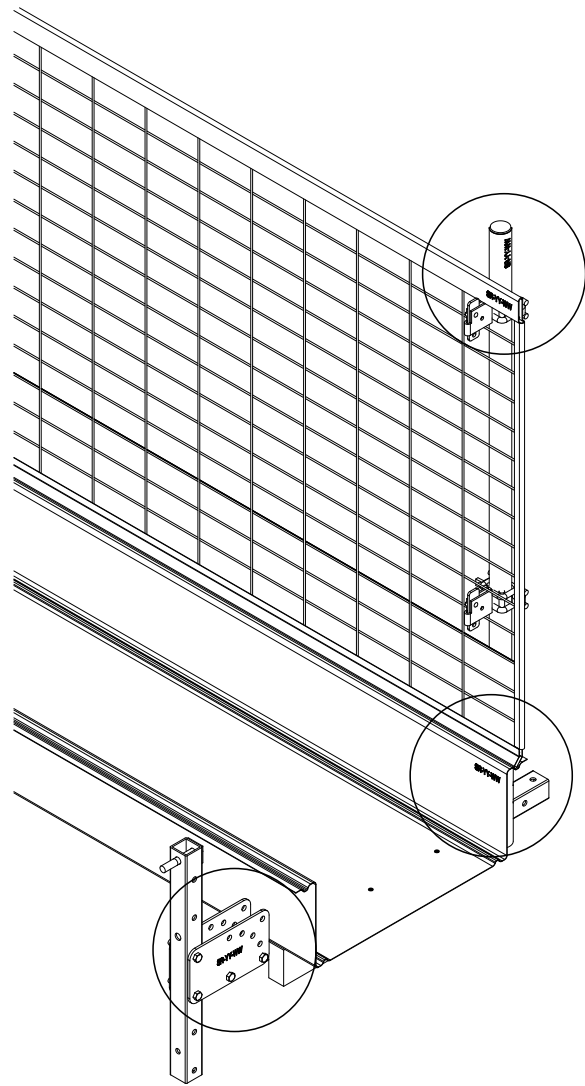
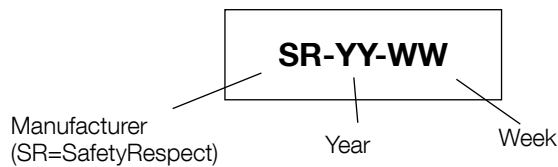
DEMOUNTING

Demounting of the Flex working platform is performed in the reverse order. Pack all components in the packaging in which they were delivered, in the same way as it was packed on delivery.

PLACING



MARKING



CLASSIFICATIONS

LOAD CLASS 2

Refers to scaffolding used for inspection and work with only light tools, such as installation, service, or repair work from hanging scaffolding. Access to the walk way is from the roof, floor edge or scaffolding tower.

Maximum allowable loads according to load class 2

Evenly distributed load: 150 kg/m²

Concentrated load: 150 kg (max 0,5×0,5 m)

Point load: 100 kg (max 0,2×0,2 m)

LOAD CLASS 3

Refers to scaffolding used for work with material placement for immediate use during plastering or the like. Access to the walk way is from the roof, floor edge or scaffolding tower.

Maximum allowable loads according to load class 3

Evenly distributed load: 200 kg/m²

Concentrated load: 150 kg (max 0,5×0,5 m)

Point load: 100 kg (max 0,2×0,2 m)

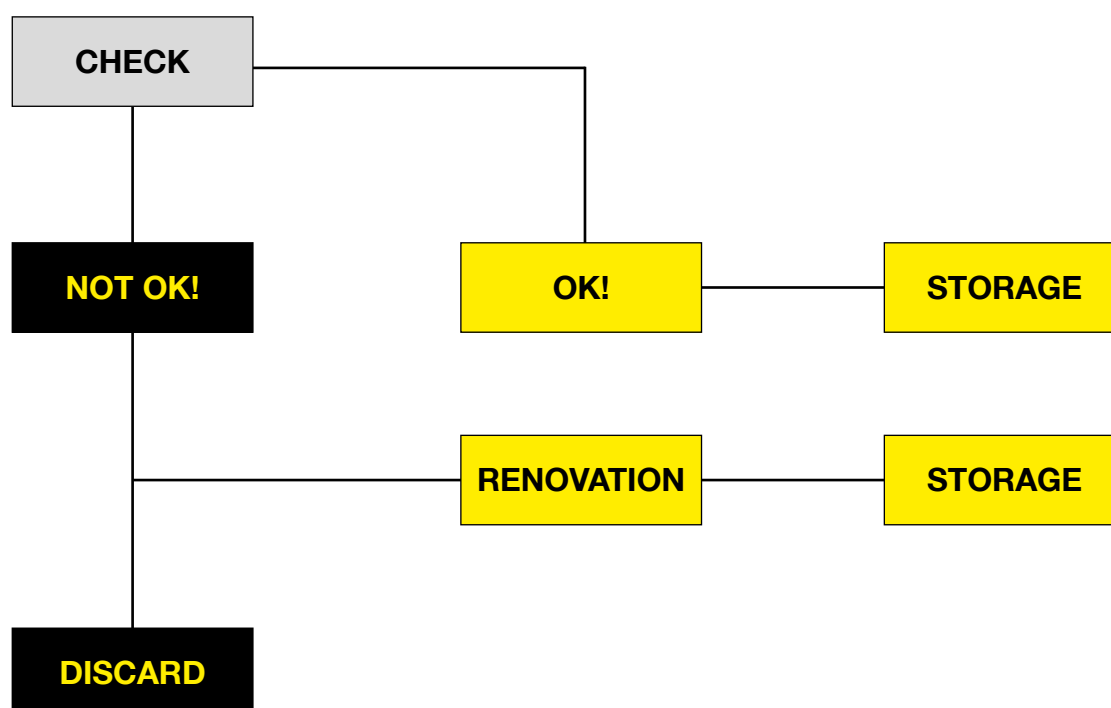
MAINTENANCE

After use, an inspection must always be carried out before storing the products. We recommend that only a person with training from SafetyRespect perform the inspection.

Check that:

- parts fit together properly
- no deformations have occurred
- no cracks have occurred
- no changes have been made to the products
- there is no rust on the parts
- no other external influences occur

Clean the parts if necessary.



Sorted products can be renovated if it is possible to restore the product to perfect condition. Renovation must be carried out by a person with the necessary knowledge, preferably with training from SafetyRespect. Only cold working of properly cleaned parts is allowed. Damaged parts that cannot be renovated must be replaced. Products that do not achieve perfect condition or cannot be restored to perfect condition must be discarded.

Products made of steel can be scrapped as steel in their entirety. Some products may need to be partially sorted. If you are unsure, consult SafetyRespect.

Store SafetyRespect products in a dry and ventilated area protected from weather, corrosive substances, and other external influences.

SAFETYCHECK FLEX WORKING PLATFORM

You can also perform the SafetyCheck directly in our mobile app. Available for Android and iPhone.

WORKPLACE		DATE	
Location		Order no.	
Site manager		Check no.	

SITE/PART OF BUILDING			
1		3	
2		4	

CHECK POINTS	YES	NO	REFERENCE	REMARKS
Are the current installation instructions available?			This manual	
Have recommended safety precautions been taken?			Page 2	
Are the components free from damage?			Page 2	
Are the attachment points strong enough?			Pages 6–7	
Are the consoles configured correctly?			Pages 6–7	
Is the maximum distance between consoles 2.4 meters?			Page 8	
Are the posts correctly mounted in the brackets?			Pages 8–9	
Are the barriers mounted in the right direction and on the right side of the posts?			Pages 8–9	
Are the barriers correctly secured with the barrier locks?			Pages 8–9	
Are the walk ways overlapping correctly and secured properly?			Pages 8–10	
Are the load requirements for load class 2 or load class 3 met?			Page 12	

SAFETYCHECK CONDUCTED BY			
Date		Signature	